



# CAINTON

Change is a perpetual motion

## AC Centrifugal Fan & Blower

---

- Code Rule - p.1
- AC Backward Centrifugal Fan – pp. 2 – 81
- AC Forward Centrifugal Fan - pp. 82 - 109
- AC Single & Double Inlet Blower - pp. 110 - 143

## Code Rule

Fan Type	Fan imension (mm)		Voltage	Speed	Connection	Mold Model	IP Level
CTA: AC Backward Centrifugal Fan	Diameter of Impeller	Thickness	V1: 115VAC	HX: Higher than Extreme	C: Connector	-Mold Model	-IP Level
CTFA: AC Forward Centrifugal Fan			V2: 230VAC	XH: Extremely High			
CTBA: AC Single & Double Inlet Blower	Diameter of Impeller	Length	V3: 380VAC	HH: Much Higher			
			V4: 440VAC	HR: Higher			
			FV: Full Voltage	H: High			
				M: Medium			
				L: Low			
				LR: Lower			
				LW: Much Lower			
				XL: Extremely Low			
		LX: Lower than Extreme					

## AC Backward Centrifugal Fan

Ø175x68mm

- Material: PA66
- Protection: IP44
- Insulation: Class F
- Certification: CE, RoHS
- Additional functions are optional



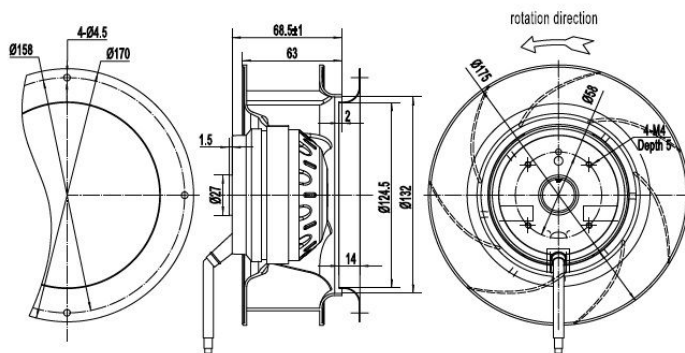
### ● Specification:

Model	Voltage	Frequency	Current	Power	Speed	Noise	Capacitor
	VAC	Hz	Amp	Watt	RPM	dB(A)	μF
CTA17568V2M-M	220	50/60	0.24/0.32	52/66	2500/2700	66	1.5

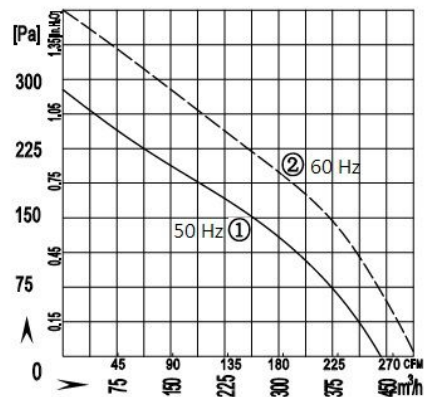
# AC Backward Centrifugal Fan

Ø175x68mm

- Dimension:  
Unit: mm



- Performance:



## AC Backward Centrifugal Fan

Ø175x68mm - B Type

- Material: Plastic PA66
- Protection: IP44
- Insulation: Class F
- Certification: CE, RoHS
- Additional functions are optional



### ● Specification:

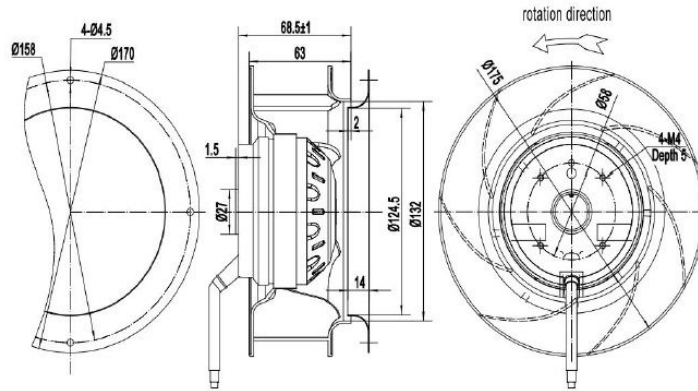
Model	Voltage	Frequency	Current	Power	Speed	Noise	Capacitor	Curve
	VAC	Hz	Amp	Watt	RPM	dB(A)	µF	
CTA17568V2M-M2	220	50	0.25	52	2530	64	1.5	①
			0.2	45	2150	60	1.5	②
			0.18	42	1850	55	1.5	③

# AC Backward Centrifugal Fan

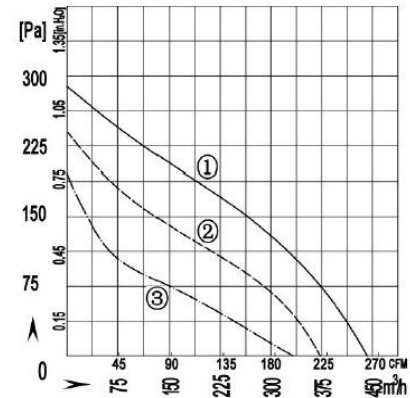
Ø175x68mm - B Type

- Dimension:

Unit: mm



- Performance:



## AC Backward Centrifugal Fan

Ø180x68mm

- Material: Plastic PA66
- Protection: IP44
- Insulation: Class F
- Certification: CE, RoHS
- Additional functions are optional



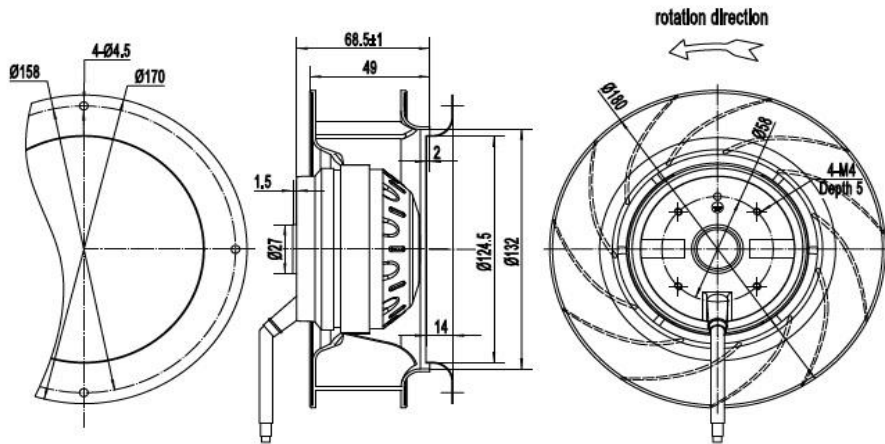
### ● Specification:

Model	Voltage	Frequency	Current	Power	Speed	Noise	Capacitor
	VAC	Hz	Amp	Watt	RPM	dB(A)	μF
CTA18068V2M-M	220	50/60	0.24/0.32	52/66	2550/2850	62/65	1.5

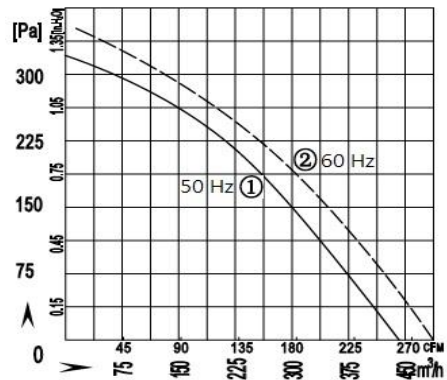
# AC Backward Centrifugal Fan

Ø180x68mm

- Dimension:  
Unit: mm



- Performance:





## AC Backward Centrifugal Fan

Ø190x68mm

- Material: Plastic PA66
- Protection: IP44
- Insulation: Class F
- Certification: CE, RoHS
- Additional functions are optional



### ● Specification:

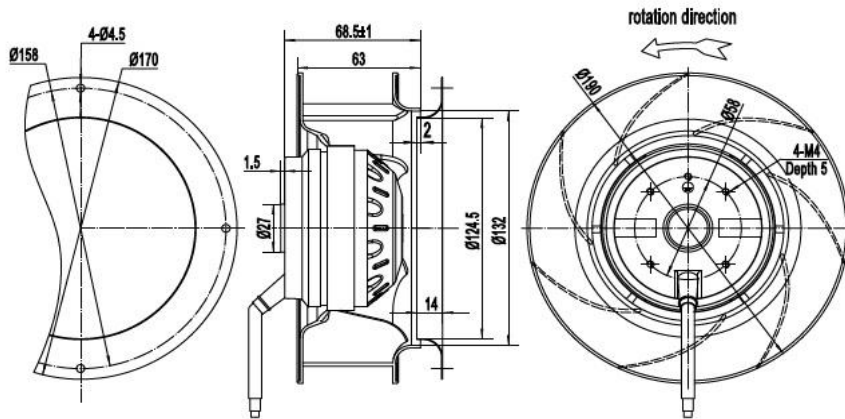
Model	Voltage	Frequency	Current	Power	Speed	Noise	Capacitor
	VAC	Hz	Amp	Watt	RPM	dB(A)	μF
CTA19068V2M-M	220	50/60	0.27/0.35	60/76	2500/2700	65/68	2

# AC Backward Centrifugal Fan

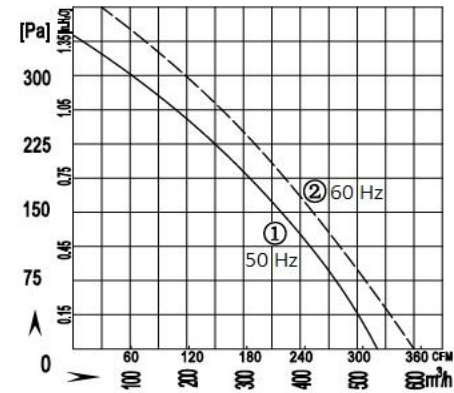
Ø190x68mm

- Dimension:

Unit: mm



- Performance:



## AC Backward Centrifugal Fan

Ø190x68mm - B Type

- Material: Plastic PA66
- Protection: IP44
- Insulation: Class F
- Certification: CE, RoHS
- Additional functions are optional



### ● Specification:

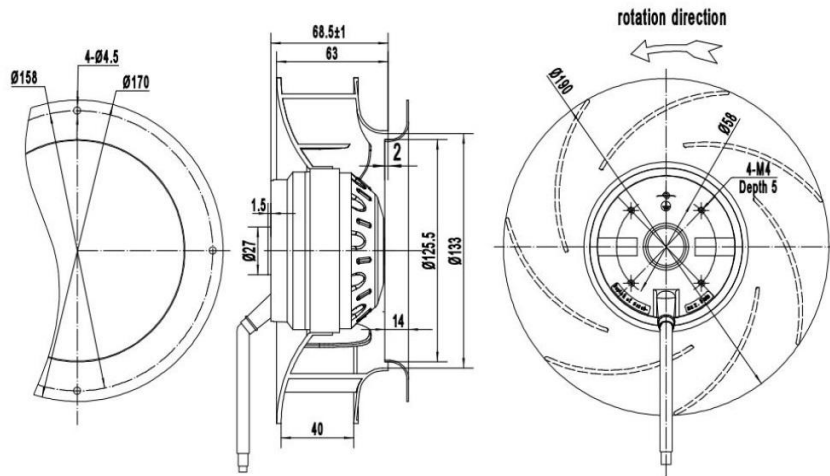
Model	Voltage	Frequency	Current	Power	Speed	Noise	Capacitor	Curve
	VAC	Hz	Amp	Watt	RPM	dB(A)	μF	
CTA19068V2M-M2	220	50	0.28	60	2500	65	2	①
			0.23	48	2000	60	2	②
			0.22	45	1650	54	2	③

# AC Backward Centrifugal Fan

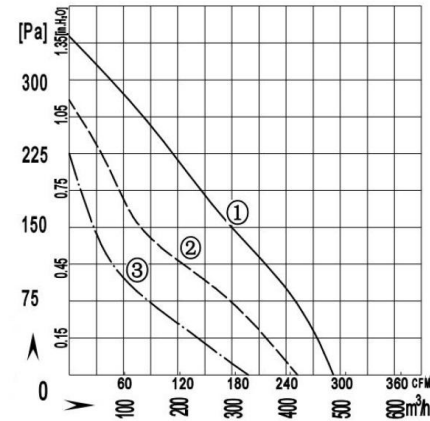
Ø190x68mm - B Type

- Dimension:

Unit: mm



- Performance:



## AC Backward Centrifugal Fan

Ø220x71mm

- Material: Plastic PA66
- Protection: IP44
- Insulation: Class F
- Certification: CE, RoHS
- Additional functions are optional



### ● Specification:

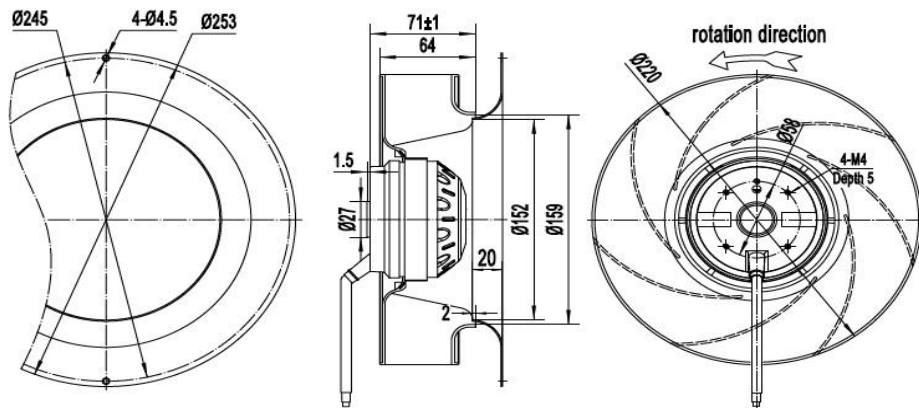
Model	Voltage	Frequency	Current	Power	Speed	Noise	Capacitor
	VAC	Hz	Amp	Watt	RPM	dB(A)	μF
CTA22071V2M-M	220	50/60	0.41/0.46	90/100	2500/2700	68/72	2.5
CTA22071V3M-M	380	50/60	0.17/0.2	85/100	2500/2700	68/72	-

# AC Backward Centrifugal Fan

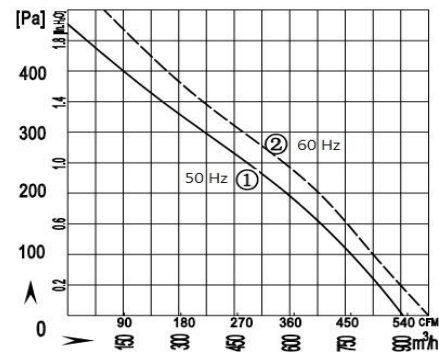
Ø220x71mm

- Dimension:

Unit: mm



- Performance:



## AC Backward Centrifugal Fan

Ø220x71mm - B Type

- Material: Plastic PA66
- Protection: IP44
- Insulation: Class F
- Certification: CE, RoHS
- Additional functions are optional



### ● Specification:

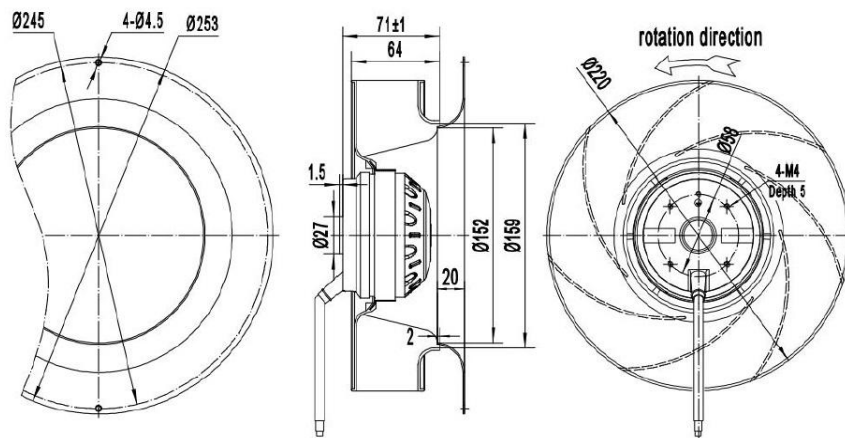
Model	Voltage	Frequency	Current	Power	Speed	Noise	Capacitor	Curve
	VAC	Hz	Amp	Watt	RPM	dB(A)	μF	
CTA22071V2M-M2	220	50	0.44	95	2500	70	2.5	①
			0.4	90	2300	66	2.5	②
			0.4	88	2000	64	2.5	③

# AC Backward Centrifugal Fan

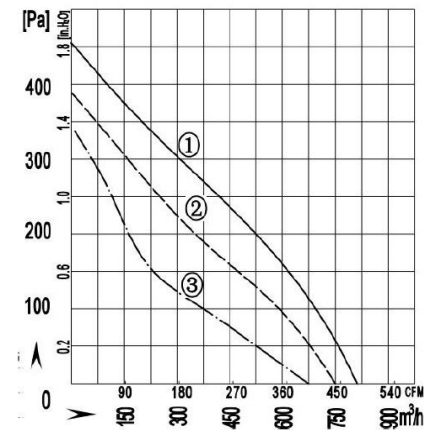
Ø220x71mm - B Type

- Dimension:

Unit: mm



- Performance:





## AC Backward Centrifugal Fan

Ø220x71mm - C Type

- Material: Plastic PA66
- Protection: IP44
- Insulation: Class F
- Certification: CE, RoHS
- Additional functions are optional



### ● Specification:

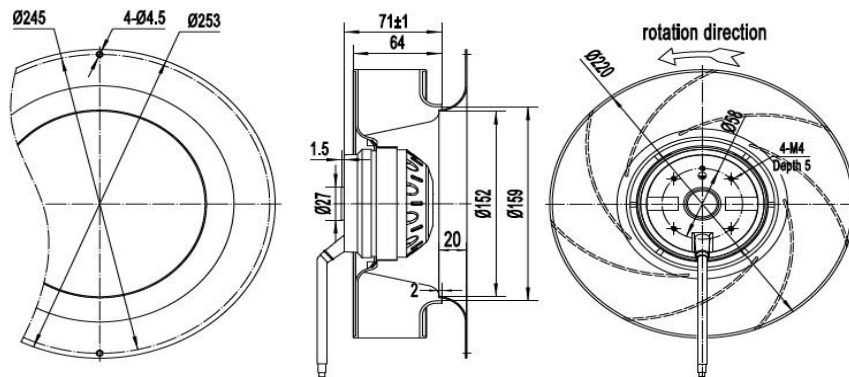
Model	Voltage	Frequency	Current	Power	Speed	Noise	Capacitor
	VAC	Hz	Amp	Watt	RPM	dB(A)	μF
CTA22071V2L-M3	220	50/60	0.23/0.19	40/41	1420/1650	52/58	1.5
CTA22071V3L-M3	380	50/60	0.08/0.1	38/41	1400/1650	58/58	-

# AC Backward Centrifugal Fan

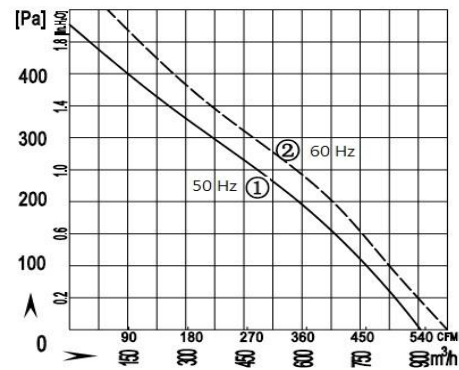
Ø220x71mm - C Type

- Dimension:

Unit: mm



- Performance:



## AC Backward Centrifugal Fan

Ø225x99mm

- Material: Plastic PA66
- Protection: IP44
- Insulation: Class F
- Certification: CE, RoHS
- Additional functions are optional



### ● Specification:

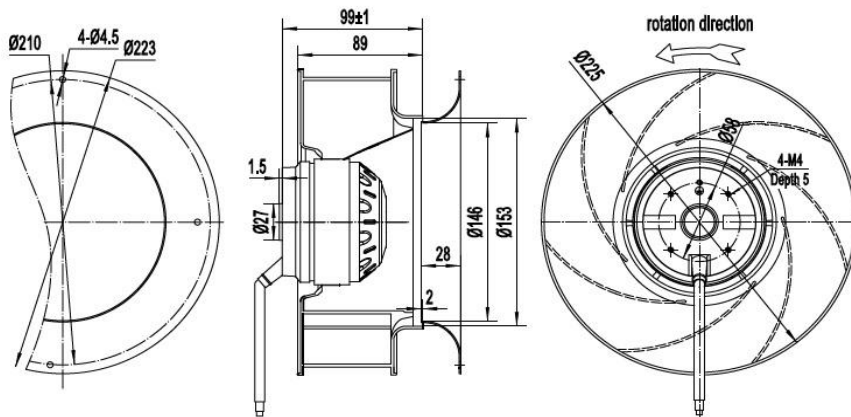
Model	Voltage	Frequency	Current	Power	Speed	Noise	Capacitor
	VAC	Hz	Amp	Watt	RPM	dB(A)	μF
CTA22599V2M-M	220	50/60	0.6/0.9	135/180	2600/2900	72/75	4
CTA22599V3M-M	380	50/60	0.23/0.28	135/180	2600/2900	72/75	-

# AC Backward Centrifugal Fan

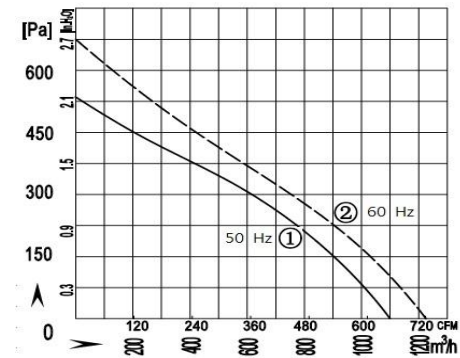
Ø225x99mm

- Dimension:

Unit: mm



- Performance:



## AC Backward Centrifugal Fan

Ø225x99mm - B Type

- Material: Plastic PA66
- Protection: IP44
- Insulation: Class F
- Certification: CE, RoHS
- Additional functions are optional



### ● Specification:

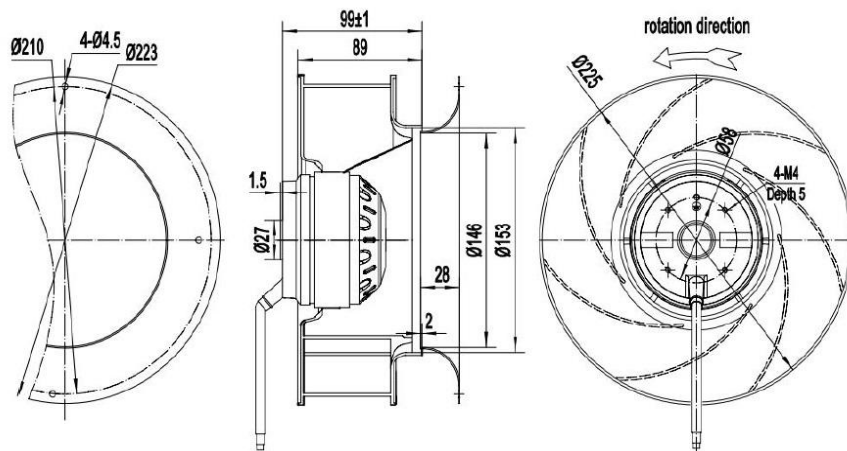
Model	Voltage	Frequency	Current	Power	Speed	Noise	Capacitor	Curve
	VAC	Hz	Amp	Watt	RPM	dB(A)	μF	
CTA22599V2M-M2	220	50	0.6	125	2630	70	4	①
			0.54	120	2500	68	4	②
			0.52	115	2290	66	4	③

# AC Backward Centrifugal Fan

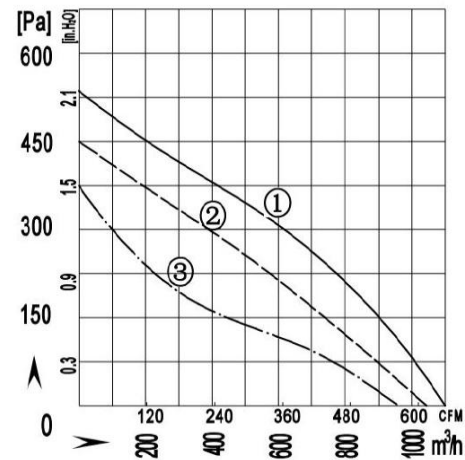
Ø225x99mm - B Type

## • Dimension:

Unit: mm



## • Performance:



## AC Backward Centrifugal Fan

Ø225x71mm

- Material: Plastic PA66
- Protection: IP44
- Insulation: Class F
- Certification: CE, RoHS
- Additional functions are optional



### ● Specification:

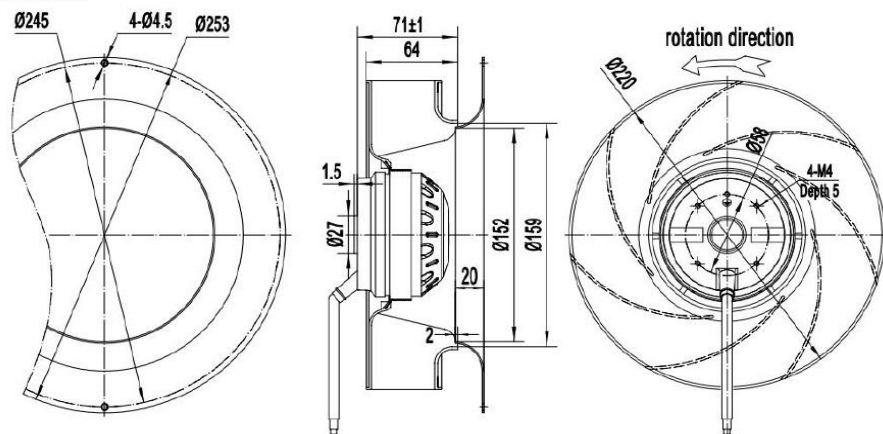
Model	Voltage	Frequency	Current	Power	Speed	Noise	Capacitor
	VAC	Hz	Amp	Watt	RPM	dB(A)	μF
CTA22571V2L-M	220	50/60	0.21/0.2	45/47	1420/1650	54/60	1.5
CTA22571V3L-M	380	50/60	0.13	45/47	1420/1650	54/60	-

# AC Backward Centrifugal Fan

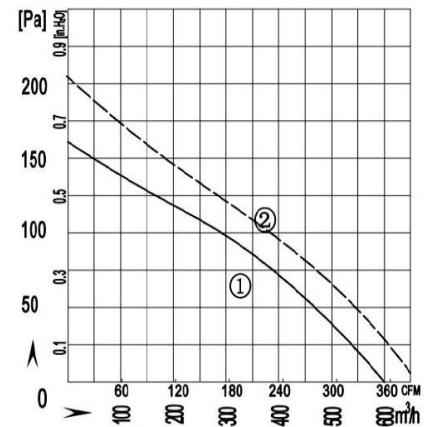
Ø225x71mm

- Dimension:

Unit: mm



- Performance:





## AC Backward Centrifugal Fan

Ø250x99mm

- Material: Plastic PA66
- Protection: IP44
- Insulation: Class F
- Certification: CE, RoHS
- Additional functions are optional



### ● Specification:

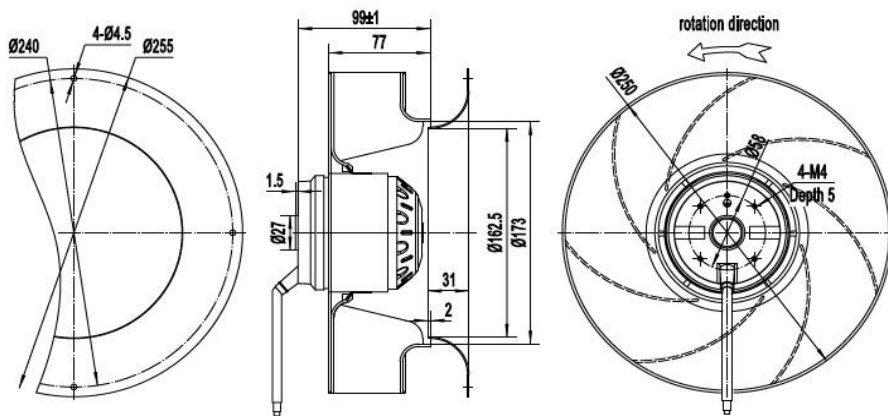
Model	Voltage	Frequency	Current	Power	Speed	Noise	Capacitor
	VAC	Hz	Amp	Watt	RPM	dB(A)	μF
CTA25099V2M-M	220	50/60	0.6/0.9	135/190	2450/2600	72/75	4
CTA25099V3M-M	380	50/60	0.32/0.38	160/185	2450/2600	72/75	-

# AC Backward Centrifugal Fan

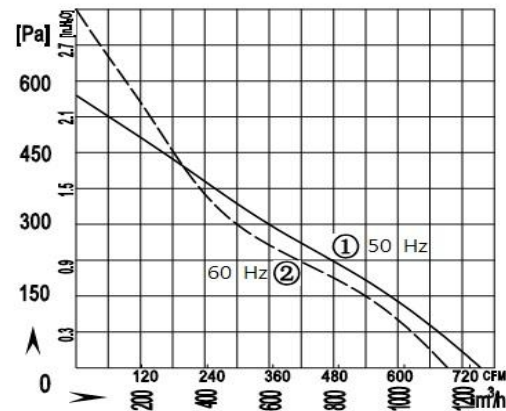
Ø250x99mm

- Dimension:

Unit: mm



- Performance:



## AC Backward Centrifugal Fan

Ø250x99mm - B Type

- Material: Plastic PA66
- Protection: IP44
- Insulation: Class F
- Certification: CE, RoHS
- Additional functions are optional



### ● Specification:

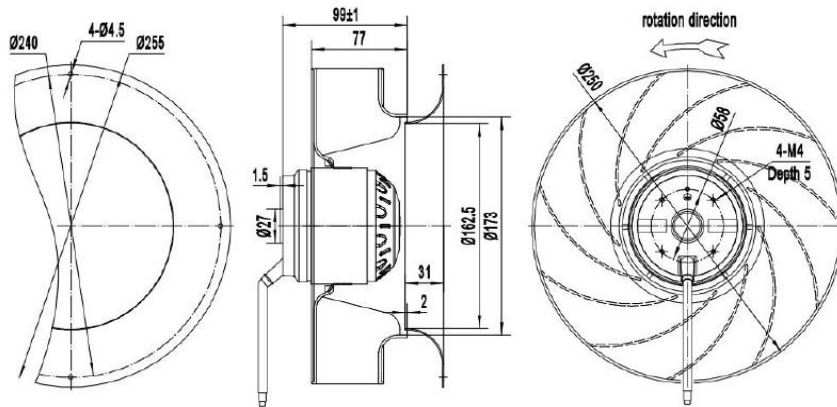
Model	Voltage	Frequency	Current	Power	Speed	Noise	Capacitor	Curve
	VAC	Hz	Amp	Watt	RPM	dB(A)	μF	
CTA25099V2M-M2	220	50	0.62	130	2650	68	4	①
			0.58	125	2400	65	4	②
			0.56	120	2150	61	4	③

# AC Backward Centrifugal Fan

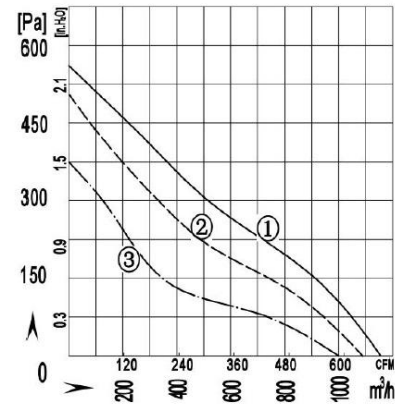
Ø250x99mm - B Type

- Dimension:

Unit: mm



- Performance:



## AC Backward Centrifugal Fan

Ø250x99mm - C Type

- Material: Plastic PA66
- Protection: IP44
- Insulation: Class F
- Certification: CE, RoHS
- Additional functions are optional



### ● Specification:

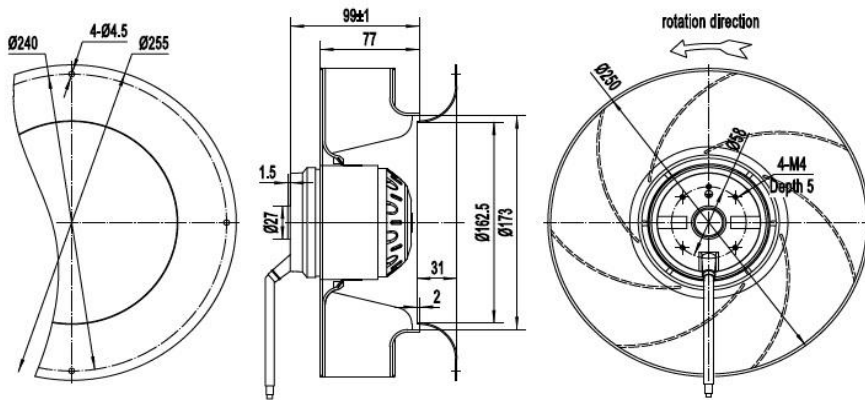
Model	Voltage	Frequency	Current	Power	Speed	Noise	Capacitor
	VAC	Hz	Amp	Watt	RPM	dB(A)	μF
CTA25099V2L-M3	220	50/60	0.28/0.28	53/58	1400/1600	61/64	2
CTA25099V3L-M3	380	50/60	0.15/0.16	53/58	1400/1600	61/64	-

# AC Backward Centrifugal Fan

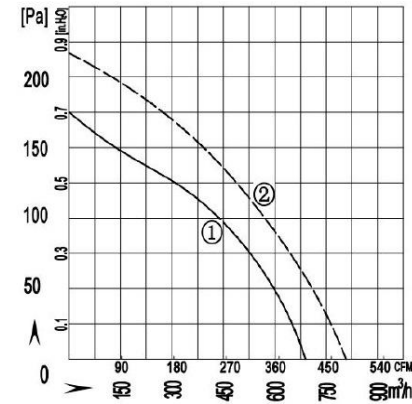
Ø250x99mm - C Type

- Dimension:

Unit: mm



- Performance:



## AC Backward Centrifugal Fan

Ø250x99mm - D Type

- Material: Galvanized Sheet Metal
- Protection: IP44
- Insulation: Class F
- Certification: CE, RoHS
- Additional functions are optional



### ● Specification:

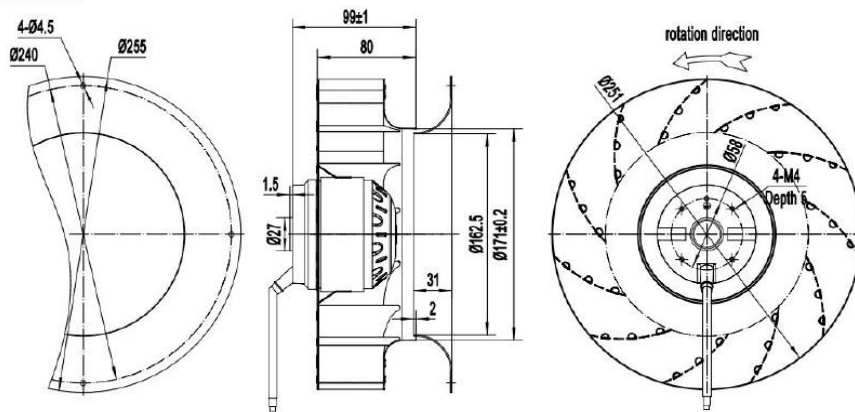
Model	Voltage	Frequency	Current	Power	Speed	Noise	Capacitor
	VAC	Hz	Amp	Watt	RPM	dB(A)	μF
CTA25099V2M-M4	220	50/60	0.7/0.95	155/210	2500/2600	70/72	4
CTA25099V3M-M4	380	50/60	0.31/0.37	150/200	2450/2550	70/72	-

# AC Backward Centrifugal Fan

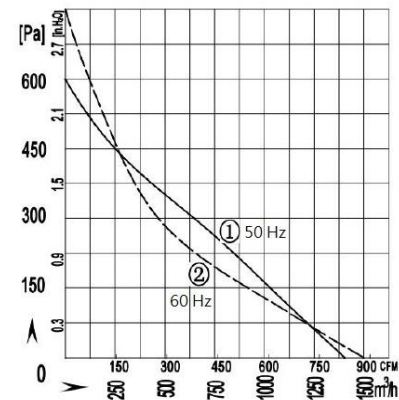
Ø250x99mm - D Type

- Dimension:

Unit: mm



- Performance:





## AC Backward Centrifugal Fan

Ø250x99mm - E Type

- Material: Galvanized Sheet Metal
- Protection: IP44
- Insulation: Class F
- Certification: CE, RoHS
- Additional functions are optional



### ● Specification:

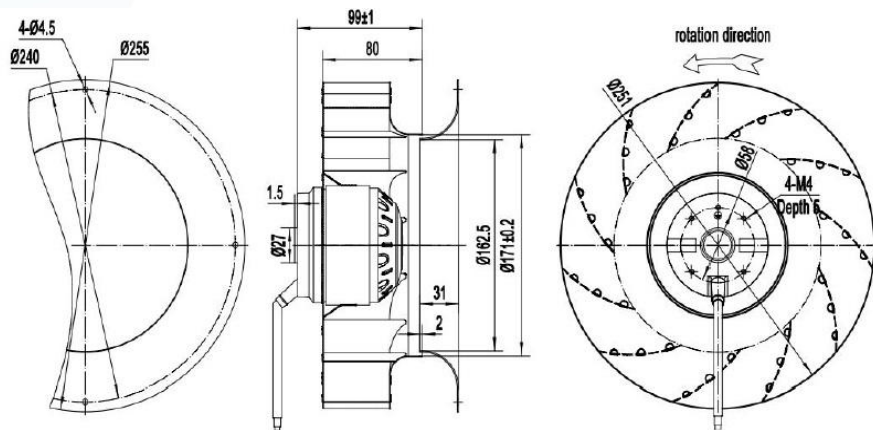
Model	Voltage	Frequency	Current	Power	Speed	Noise	Capacitor
	VAC	Hz	Amp	Watt	RPM	dB(A)	μF
CTA25099V2L-M5	220	50/60	0.24/0.27	50/60	1400/1600	68/70	2
CTA25099V3L-M5	380	50/60	0.15/0.15	50/60	1450/1600	68/70	-

# AC Backward Centrifugal Fan

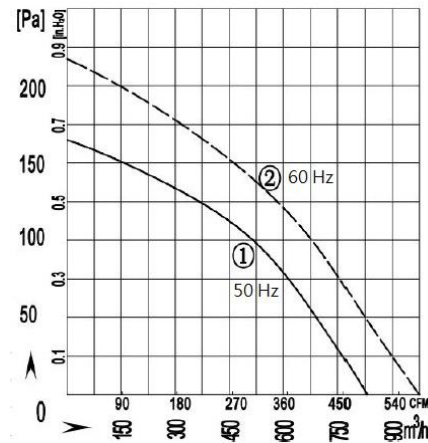
Ø250x99mm - E Type

## • Dimension:

Unit: mm



## • Performance:



## AC Backward Centrifugal Fan

Ø280x106mm

- Material: Galvanized Sheet Metal
- Protection: IP44
- Insulation: Class F
- Certification: CE, RoHS
- Additional functions are optional



### • Specification:

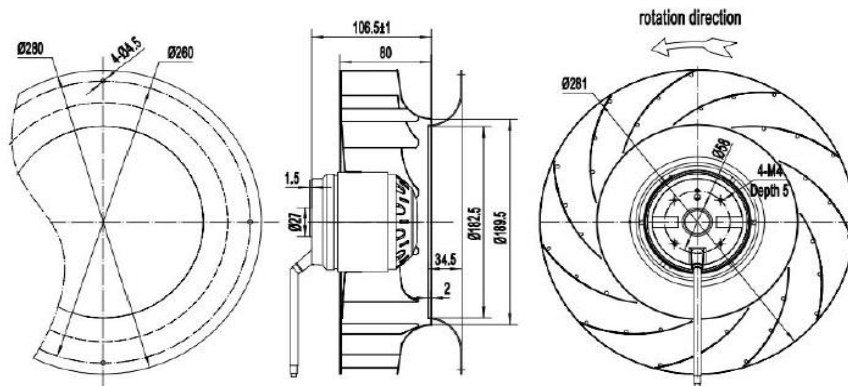
Model	Voltage	Frequency	Current	Power	Speed	Noise	Capacitor	Curve
	VAC	Hz	Amp	Watt	RPM	dB(A)	µF	
CTA280106V2M-M	230	50	1.1	230	2450	79	6	①
CTA280106V3M-M	380	50	0.6	200	2500	79	-	①
CTA280106V2L-M	230	50	0.35	68	1380	79	2.5	②

# AC Backward Centrifugal Fan

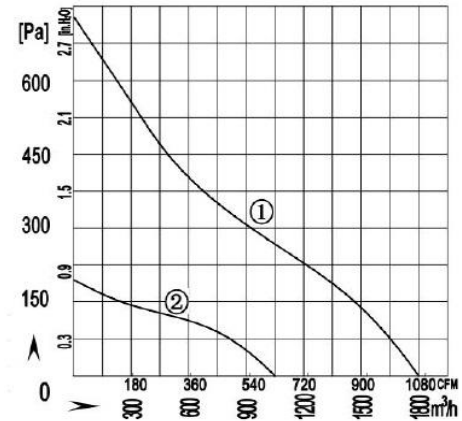
Ø280x106mm

- Dimension:

Unit: mm



- Performance:



## AC Backward Centrifugal Fan

Ø280x136mm

- Material: Galvanized Sheet Metal
- Protection: IP44
- Insulation: Class F
- Certification: CE, RoHS
- Additional functions are optional



### • Specification:

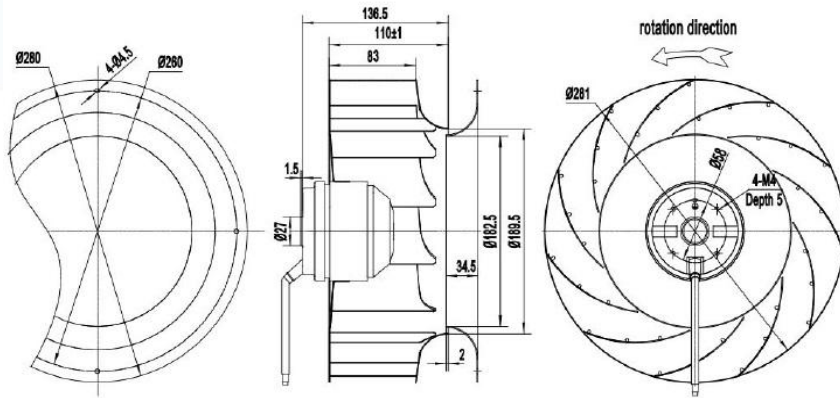
Model	Voltage	Frequency	Current	Power	Speed	Noise	Capacitor
	VAC	Hz	Amp	Watt	RPM	dB(A)	µF
CTA280136V2L-M	230	50/60	0.38/0.45	80/100	1350/1500	63/66	3

# AC Backward Centrifugal Fan

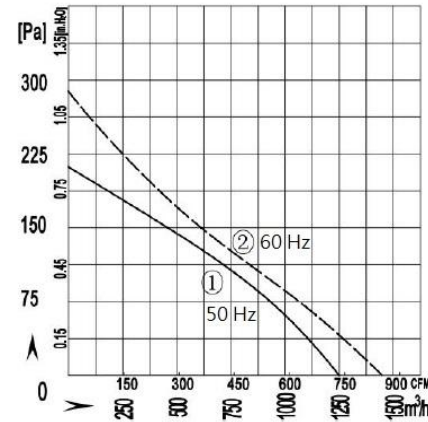
Ø280x136mm

- Dimension:

Unit: mm



- Performance:



## AC Backward Centrifugal Fan

Ø280x115mm

- Material: Galvanized Sheet Metal
- Protection: IP44
- Insulation: Class F
- Certification: CE, RoHS
- Additional functions are optional



### ● Specification:

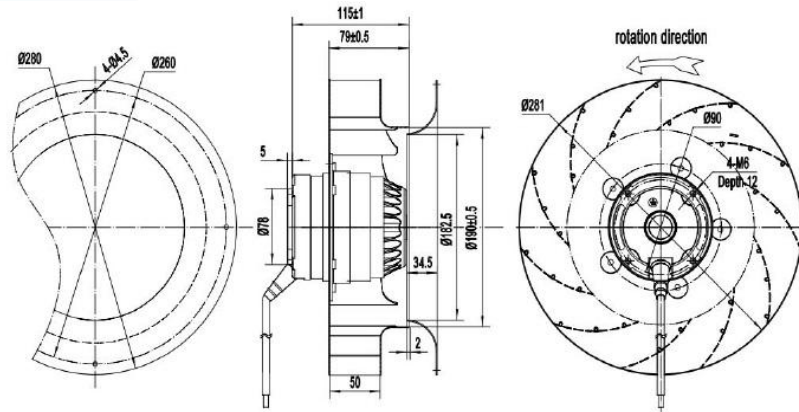
Model	Voltage	Frequency	Current	Power	Speed	Noise	Capacitor
	VAC	Hz	Amp	Watt	RPM	dB(A)	μF
CTA280115V2M-M	230	50	1.2	250	2650	80	7
CTA280115V3M-M	380	50	0.7	250	2650	80	-

# AC Backward Centrifugal Fan

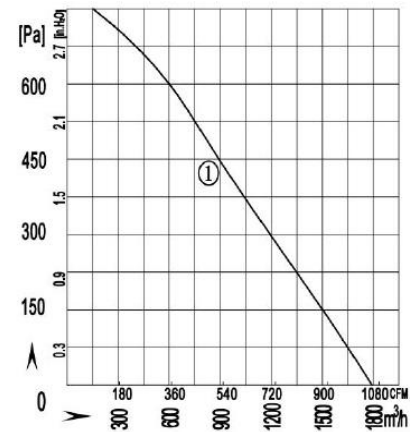
Ø280x115mm

- Dimension:

Unit: mm



- Performance:





## AC Backward Centrifugal Fan

Ø280x174mm

- Material: Galvanized Sheet Metal
- Protection: IP54
- Insulation: Class F
- Certification: CE, RoHS
- Additional functions are optional



### ● Specification:

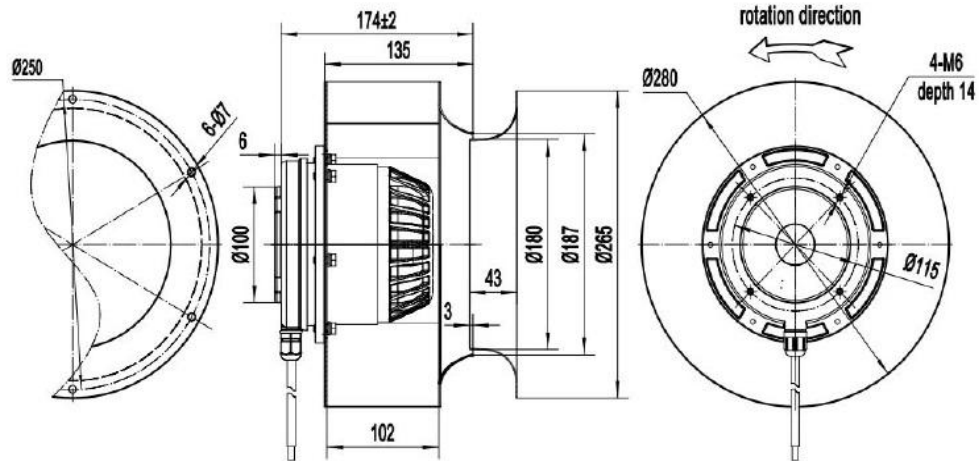
Model	Voltage	Frequency	Current	Power	Speed	Noise	Capacitor
	VAC	Hz	Amp	Watt	RPM	dB(A)	μF
CTA280174V4M-M	400	50/60	0.95/1.6	500/680	2750/2900	78/80	-

# AC Backward Centrifugal Fan

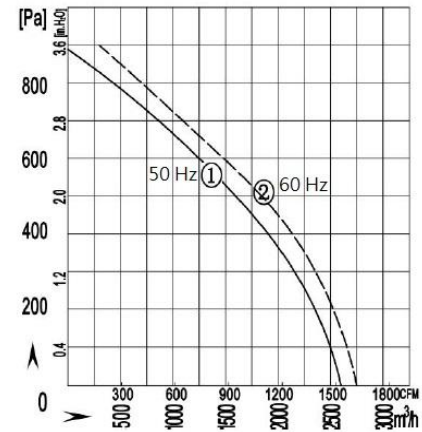
Ø280x174mm

- Dimension:

Unit: mm



- Performance:



## AC Backward Centrifugal Fan

Ø315x109mm

- Material: Sheet Aluminum
- Protection: IP54
- Insulation: Class F
- Certification: CE, RoHS
- Additional functions are optional



### ● Specification:

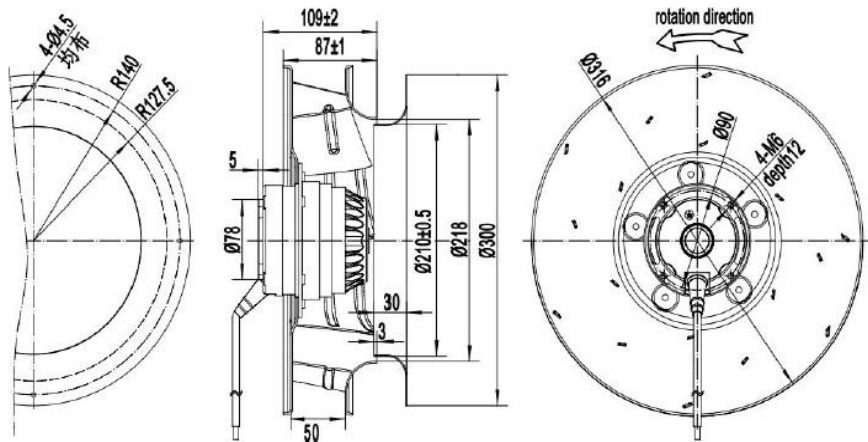
Model	Voltage	Frequency	Current	Power	Speed	Noise	Capacitor
	VAC	Hz	Amp	Watt	RPM	dB(A)	μF
CTA315109V2L-M	220	50/60	0.5/0.6	95/115	1400/1600	56/58	3

# AC Backward Centrifugal Fan

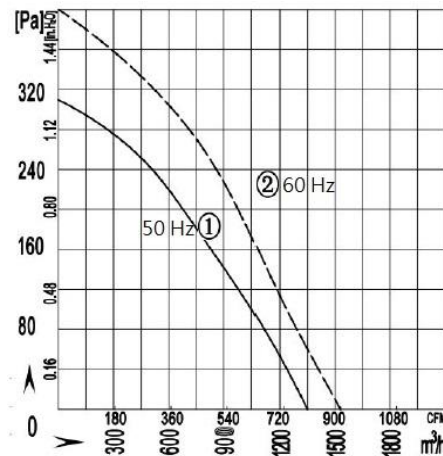
Ø315x109mm

- Dimension:

Unit: mm



- Performance:



## AC Backward Centrifugal Fan

Ø315x132mm

- Material: Sheet Aluminum
- Protection: IP54
- Insulation: Class F
- Certification: CE, RoHS
- Additional functions are optional



### ● Specification:

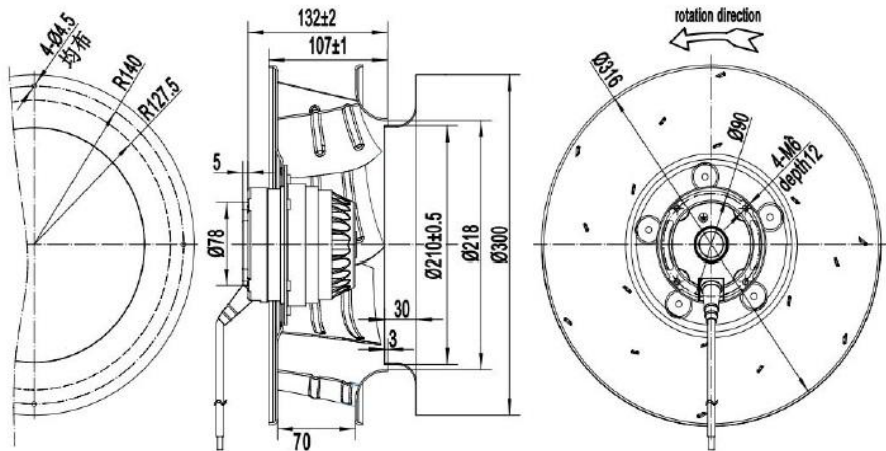
Model	Voltage	Frequency	Current	Power	Speed	Noise	Capacitor
	VAC	Hz	Amp	Watt	RPM	dB(A)	μF
CTA315132V2L-M	220	50/60	0.55/0.65	105/135	1400/1600	60/62	3

# AC Backward Centrifugal Fan

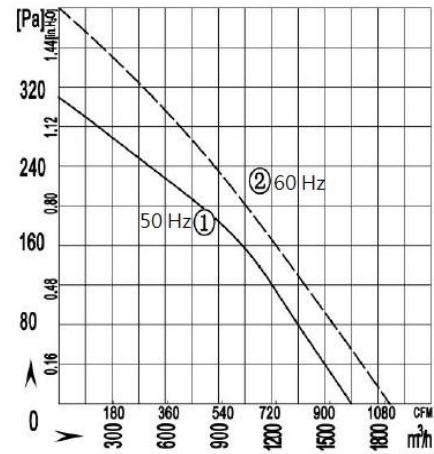
Ø315x132mm

- Dimension:

Unit: mm



- Performance:



## AC Backward Centrifugal Fan

Ø315x160mm

- Material: Sheet Aluminum
- Protection: IP54
- Insulation: Class F
- Certification: CE, RoHS
- Additional functions are optional



### ● Specification:

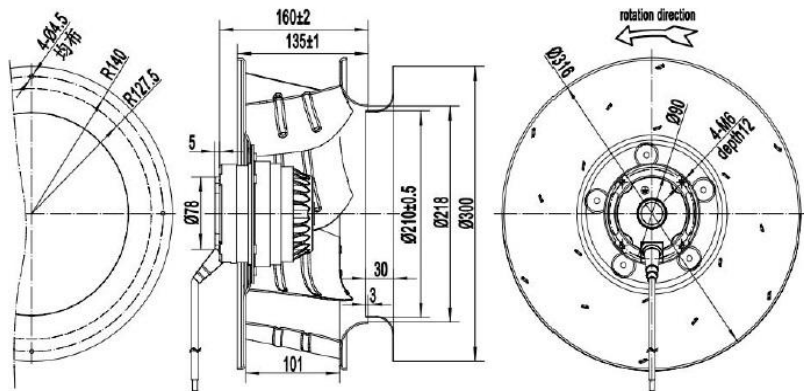
Model	Voltage	Frequency	Current	Power	Speed	Noise	Capacitor	Curve	
	VAC	Hz	Amp	Watt	RPM	dB(A)	μF	50Hz	60Hz
CTA315160V2L-M	220	50/60	0.6/0.8	135/180	1400/1580	63/65	3	①	②
CTA315160V2LR-M	220	50/60	0.38/0.42	75/85	940/1050	58/60	3	③	④
CTA315160V3L-M	380	50/60	0.35/0.4	136/175	1400/1580	63/65	-	①	②

# AC Backward Centrifugal Fan

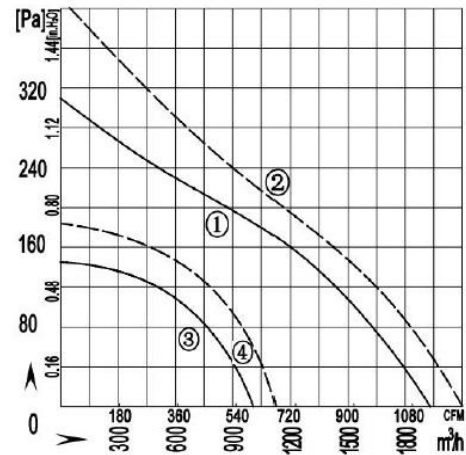
Ø315x160mm

- Dimension:

Unit: mm



- Performance:





## AC Backward Centrifugal Fan

Ø315x157mm

- Material: Sheet Aluminum
- Protection: IP54
- Insulation: Class F
- Certification: CE, RoHS
- Additional functions are optional



### ● Specification:

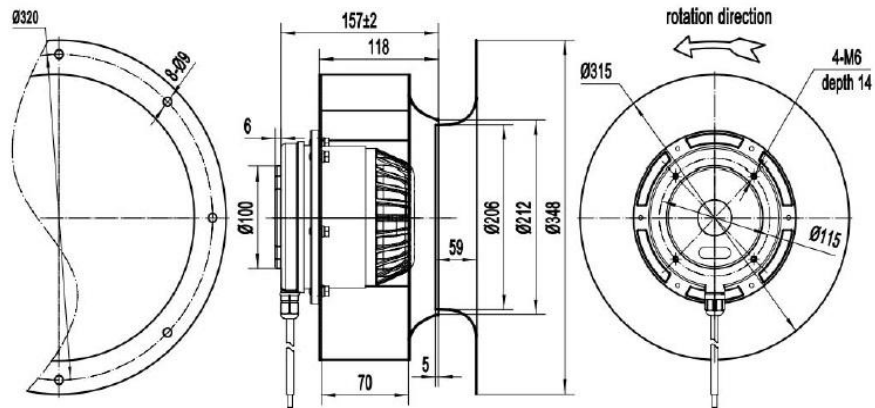
Model	Voltage	Frequency	Current	Power	Speed	Noise	Capacitor
	VAC	Hz	Amp	Watt	RPM	dB(A)	μF
CTA315157V3M-M	380	50	1.5	800	2750	84	-

# AC Backward Centrifugal Fan

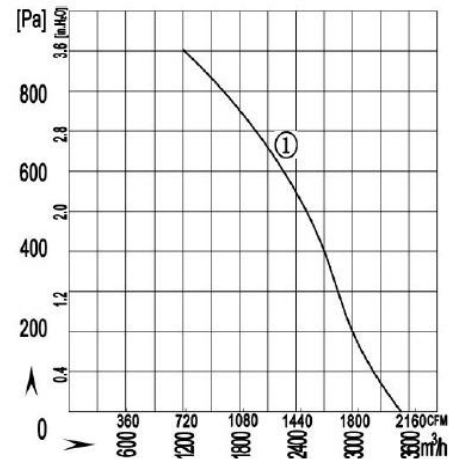
Ø315x157mm

- Dimension:

Unit: mm



- Performance:



## AC Backward Centrifugal Fan

Ø315x184mm

- Material: Sheet Aluminum
- Protection: IP54
- Insulation: Class F
- Certification: CE, RoHS
- Additional functions are optional



### ● Specification:

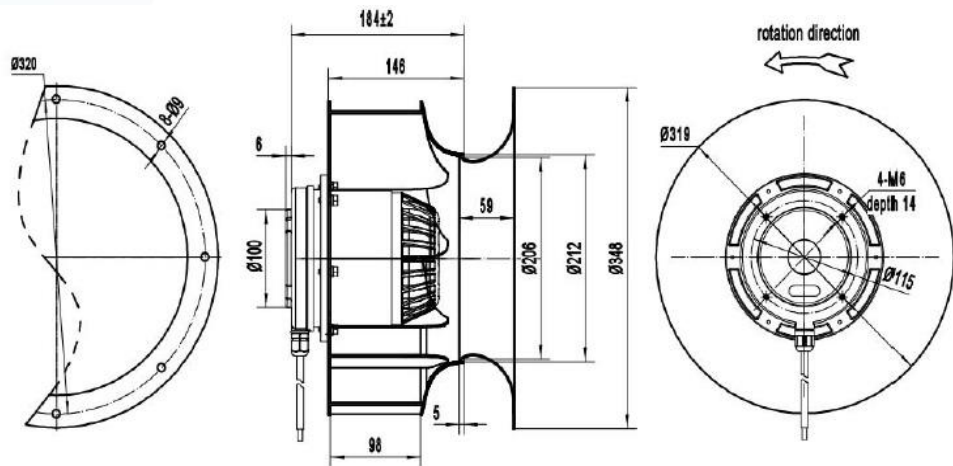
Model	Voltage	Frequency	Current	Power	Speed	Noise	Capacitor
	VAC	Hz	Amp	Watt	RPM	dB(A)	μF
CTA315184V3L-M	380	50/60	1/0.85	220/340	1450/1700	64/68	-

# AC Backward Centrifugal Fan

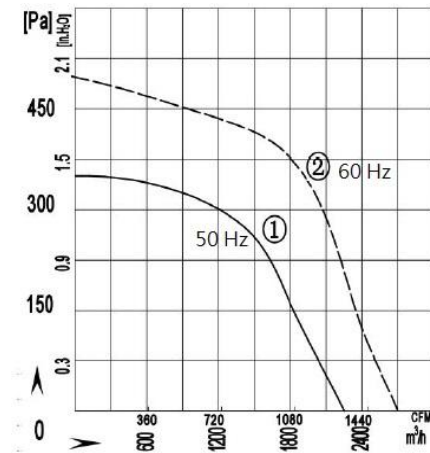
Ø315x184mm

- Dimension:

Unit: mm



- Performance:



## AC Backward Centrifugal Fan

Ø355x168mm

- Material: Sheet Aluminum
- Protection: IP54
- Insulation: Class F
- Certification: CE, RoHS
- Additional functions are optional



### ● Specification:

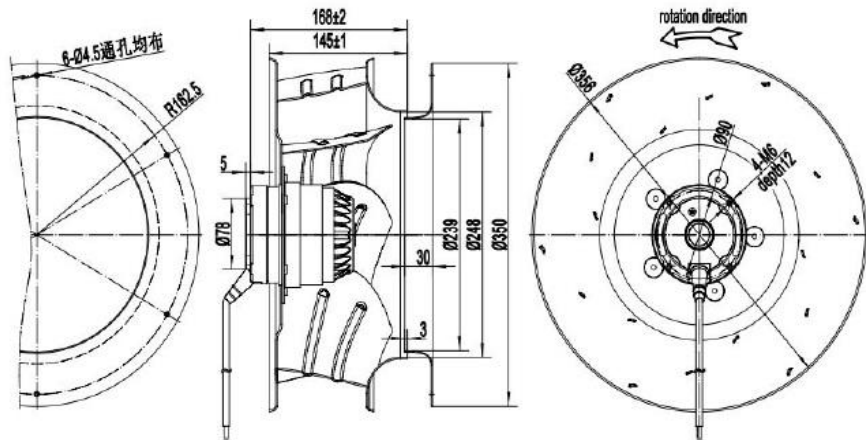
Model	Voltage	Frequency	Current	Power	Speed	Noise	Capacitor	Curve	
	VAC	Hz	Amp	Watt	RPM	dB(A)	μF	50Hz	60Hz
CTA355168V2L-M	220	50/60	0.75/1.2	165/245	1400/1460	63/65	6	①	②
CTA355168V2LR-M	220	50/60	0.46/0.5	100/130	930/1080	60/61	4	③	④
CTA355168V3L-M	380	50/60	0.46/0.48	170/250	1400/1500	63/65	-	①	②

# AC Backward Centrifugal Fan

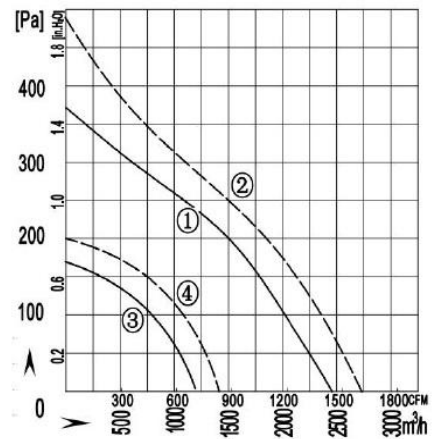
Ø355x168mm

- Dimension:

Unit: mm



- Performance:



## AC Backward Centrifugal Fan

Ø355x192mm

- Material: Sheet Aluminum
- Protection: IP54
- Insulation: Class F
- Certification: CE, RoHS
- Additional functions are optional



### • Specification:

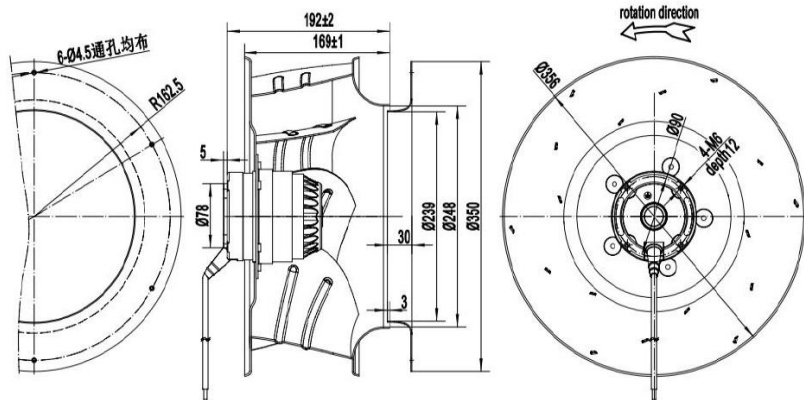
Model	Voltage	Frequency	Current	Power	Speed	Noise	Capacitor
	VAC	Hz	Amp	Watt	RPM	dB(A)	μF
CTA355192V2L-M	220	50/60	1/1.35	210/280	1350/1550	65/67	7/6
CTA355192V3L-M	380	50/60	0.53/0.55	200/270	1380/1600	65/67	-

# AC Backward Centrifugal Fan

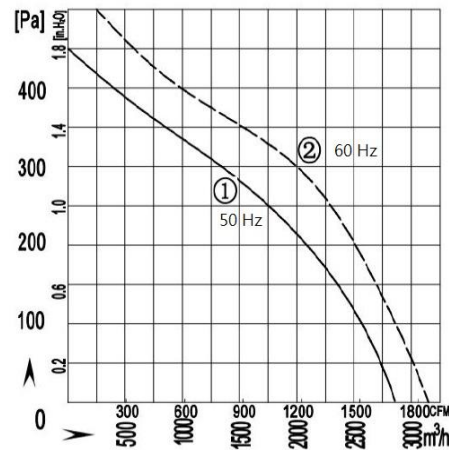
Ø355x192mm

- Dimension:

Unit: mm



- Performance:





## AC Backward Centrifugal Fan

Ø355x263mm

- Material: Sheet Aluminum
- Protection: IP54
- Insulation: Class F
- Certification: CE, RoHS
- Additional functions are optional



### ● Specification:

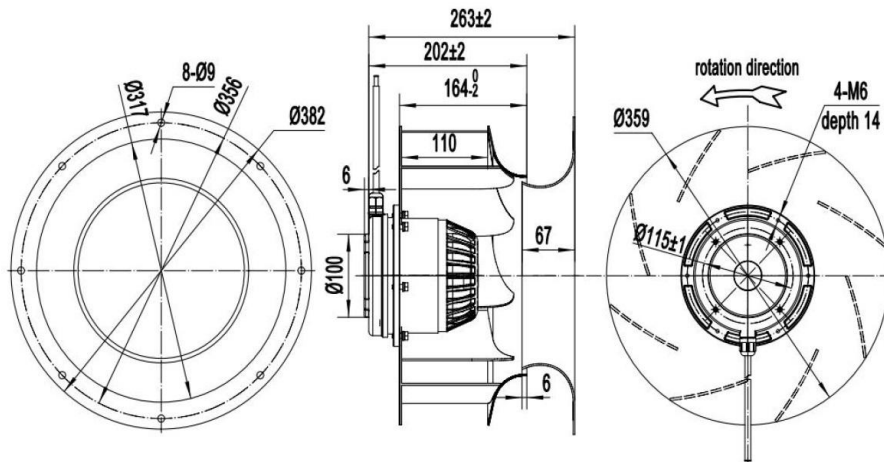
Model	Voltage	Frequency	Current	Power	Speed	Noise	Capacitor
	VAC	Hz	Amp	Watt	RPM	dB(A)	μF
CTA355263V3L-M	380	50/60	1/1.1	350/550	1450/1700	72/77	-
CTA355263V3LR-M	380	50/60	2.2/2.6	400/600	1400/1700	72/77	12

# AC Backward Centrifugal Fan

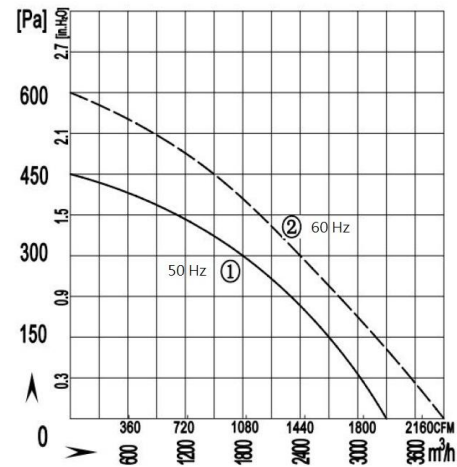
Ø355x263mm

- Dimension:

Unit: mm



- Performance:



## AC Backward Centrifugal Fan

Ø400x168mm

- Material: Sheet Aluminum
- Protection: IP54
- Insulation: Class F
- Certification: CE, RoHS
- Additional functions are optional



### ● Specification:

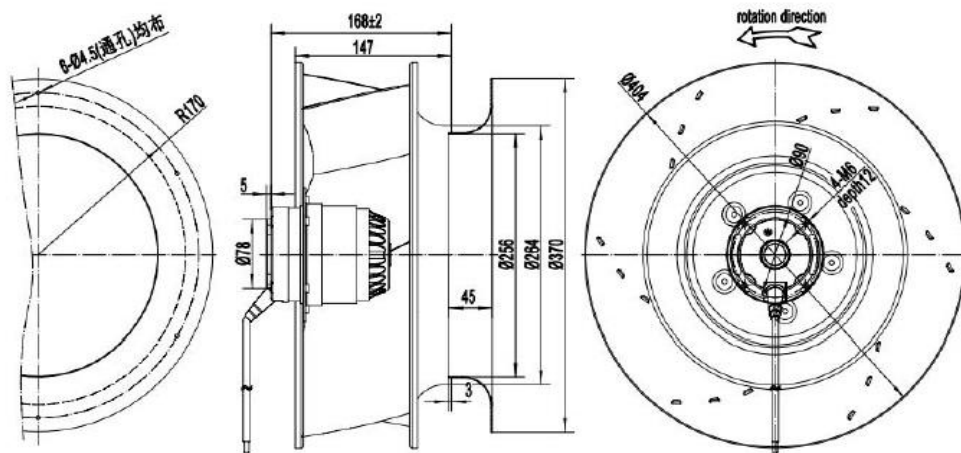
Model	Voltage	Frequency	Current	Power	Speed	Noise	Capacitor	Curve	
	VAC	Hz	Amp	Watt	RPM	dB(A)	μF	50Hz	60Hz
CTA400168V2L-M	220	50/60	1.2/1.5	260/330	1350/1450	64/68	7/6	①	②
CTA400168V3L-M	380	50/60	0.6/0.5	265/320	1380/1460	64/68	-	①	②
CTA400168V2LR-M	220	50/60	0.72/0.85	135/155	940/1050	56/57	6	③	④

# AC Backward Centrifugal Fan

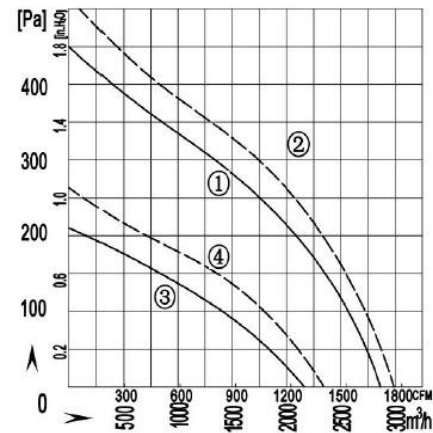
Ø400x168mm

## • Dimension:

Unit: mm



## • Performance:



## AC Backward Centrifugal Fan

Ø400x220mm

- Material: Sheet Aluminum
- Protection: IP54
- Insulation: Class F
- Certification: CE, RoHS
- Additional functions are optional



### ● Specification:

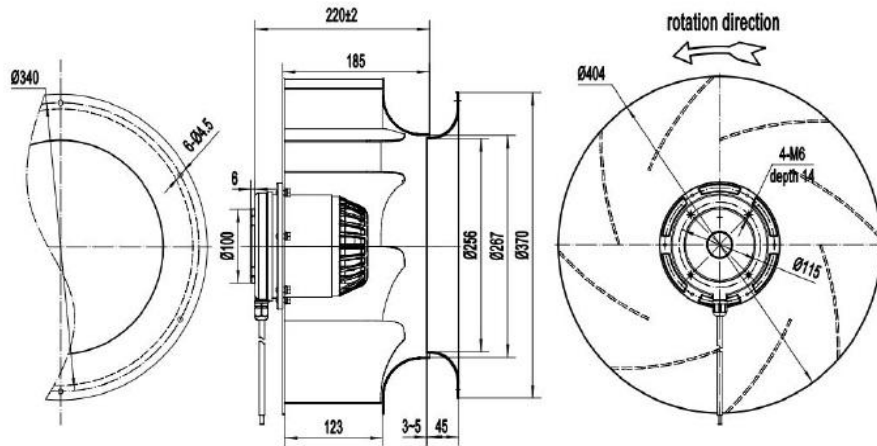
Model	Voltage	Frequency	Current	Power	Speed	Noise	Capacitor
	VAC	Hz	Amp	Watt	RPM	dB(A)	μF
CTA400220V2L-M	220	50	1.5	510	1380	69	10
CTA400220V3L-M	380	50	0.8	510	1370	69	-

# AC Backward Centrifugal Fan

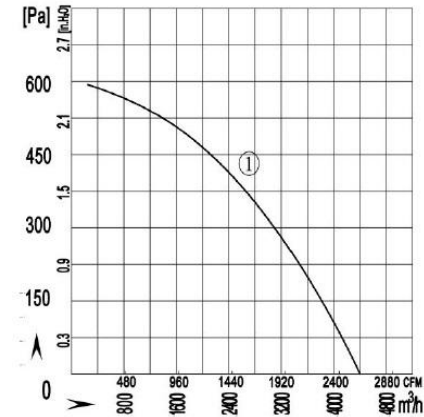
Ø400x220mm

- Dimension:

Unit: mm



- Performance:



## AC Backward Centrifugal Fan

Ø400x220mm - B Type

- Material: Sheet Aluminum
- Protection: IP54
- Insulation: Class F
- Certification: CE, RoHS
- Additional functions are optional



### • Specification:

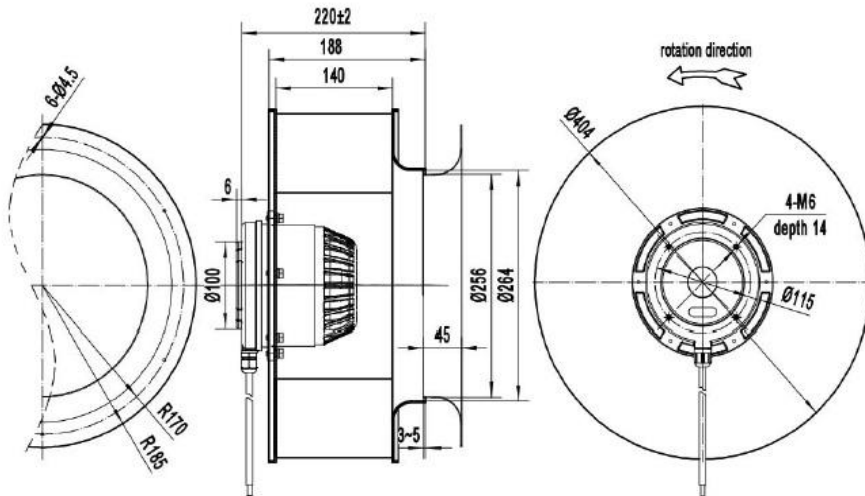
Model	Voltage	Frequency	Current	Power	Speed	Noise	Capacitor
	VAC	Hz	Amp	Watt	RPM	dB(A)	μF
CTA400220V2L-M2	220	50	1.5	430	1380	66	10
CTA400220V3L-M2	380	50	0.8	440	1380	66	-

# AC Backward Centrifugal Fan

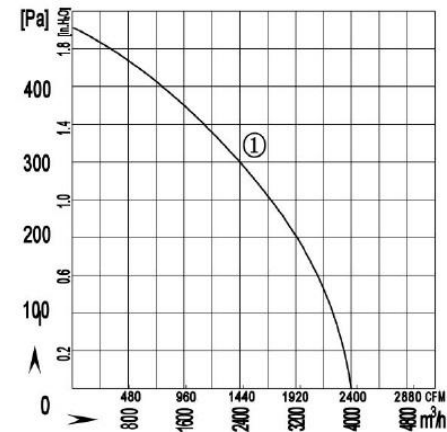
Ø400x220mm - B Type

- Dimension:

Unit: mm



- Performance:





## AC Backward Centrifugal Fan

Ø450x219mm

- Material: Sheet Aluminum
- Protection: IP54
- Insulation: Class F
- Certification: CE, RoHS
- Additional functions are optional



### • Specification:

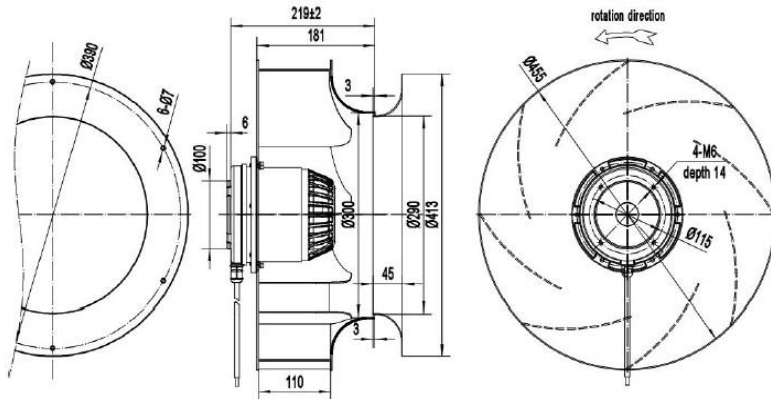
Model	Voltage	Frequency	Current	Power	Speed	Noise	Capacitor
	VAC	Hz	Amp	Watt	RPM	dB(A)	μF
CTA450219V3L-M	380	50	1.5	800	1350	76	-

# AC Backward Centrifugal Fan

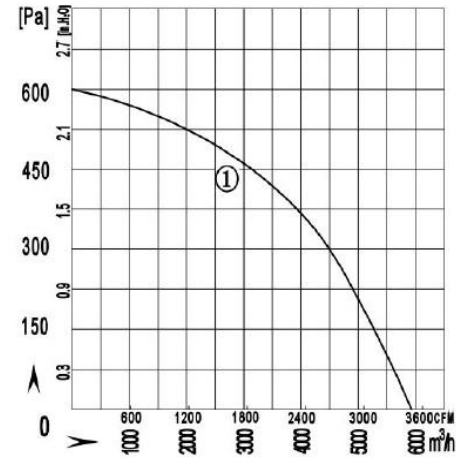
Ø450x219mm

- Dimension:

Unit: mm



- Performance:



## AC Backward Centrifugal Fan

Ø450x244mm

- Material: Sheet Aluminum
- Protection: IP54
- Insulation: Class F
- Certification: CE, RoHS
- Additional functions are optional



### ● Specification:

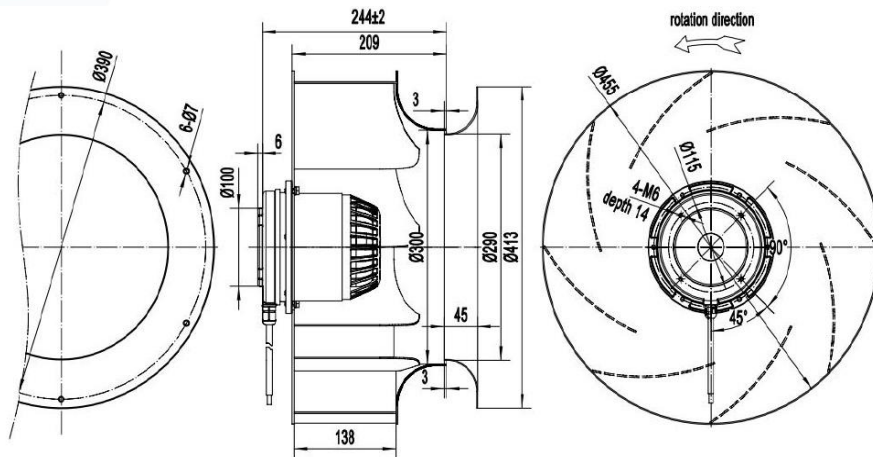
Model	Voltage	Frequency	Current	Power	Speed	Noise	Capacitor
	VAC	Hz	Amp	Watt	RPM	dB(A)	μF
CTA450244V3L-M	380	50	1.5	800	1350	79	-

# AC Backward Centrifugal Fan

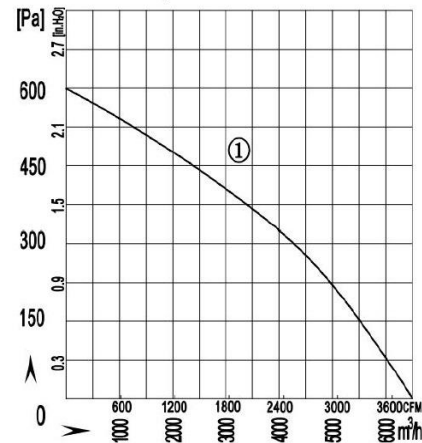
Ø450x244mm

## • Dimension:

Unit: mm



## • Performance:



## AC Backward Centrifugal Fan

Ø450x258mm

- Material: Sheet Aluminum
- Protection: IP54
- Insulation: Class F
- Certification: CE, RoHS
- Additional functions are optional



### ● Specification:

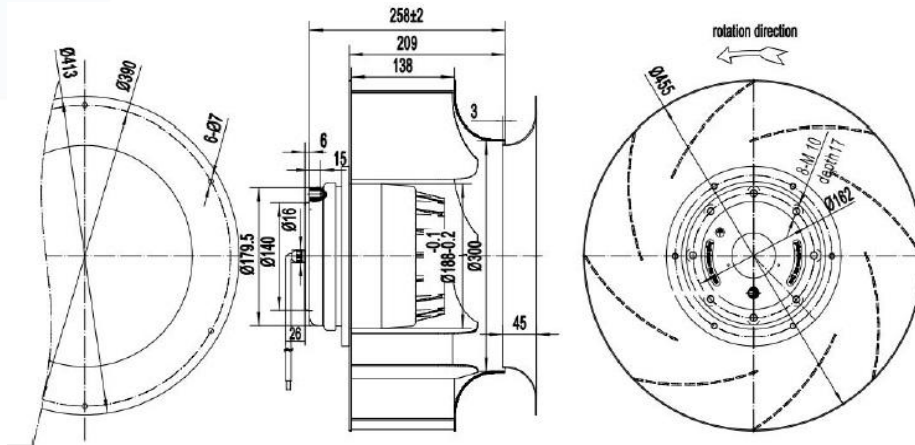
Model	Voltage	Frequency	Current	Power	Speed	Noise	Capacitor
	VAC	Hz	Amp	Watt	RPM	dB(A)	μF
CTA450258V3L-M	380	50	2.5	1100	1400	82	-

# AC Backward Centrifugal Fan

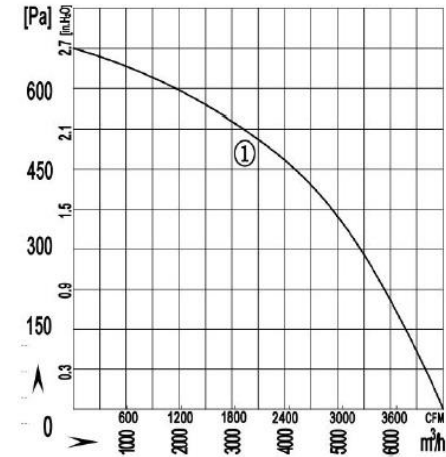
Ø450x258mm

- Dimension:

Unit: mm



- Performance:



## AC Backward Centrifugal Fan

Ø450x250mm

- Material: Sheet Aluminum
- Protection: IP54
- Insulation: Class F
- Certification: CE, RoHS
- Additional functions are optional



### ● Specification:

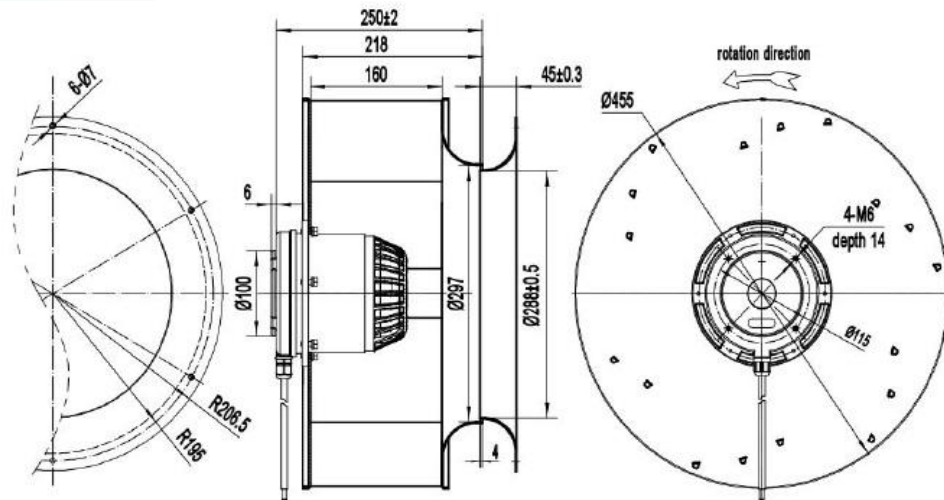
Model	Voltage	Frequency	Current	Power	Speed	Noise	Capacitor
	VAC	Hz	Amp	Watt	RPM	dB(A)	μF
CTA450250V2L-M	220	50/60	1.3/1.6	260/350	930/1050	60/61	10
CTA450250V3L-M	380	50/60	1/1.2	300/360	920/1050	60/61	-

# AC Backward Centrifugal Fan

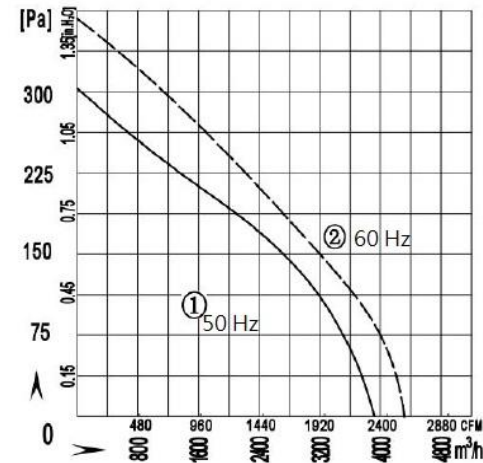
Ø450x250mm

- Dimension:

Unit: mm



- Performance:





## AC Backward Centrifugal Fan

Ø500x282mm

- Material: Sheet Aluminum
- Protection: IP54
- Insulation: Class F
- Certification: CE, RoHS
- Additional functions are optional



### ● Specification:

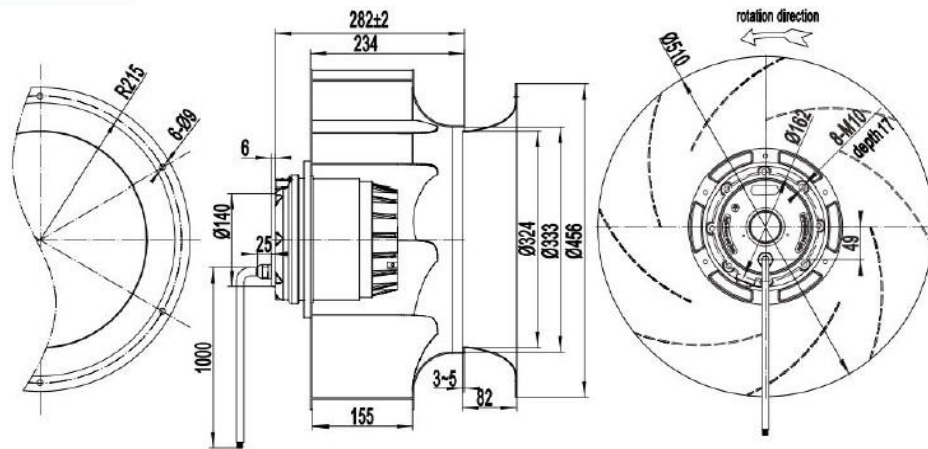
Model	Voltage	Frequency	Current	Power	Speed	Noise	Capacitor
	VAC	Hz	Amp	Watt	RPM	dB(A)	μF
CTA500282V3L-M	380	50	2.6	1500	1400	80	-

# AC Backward Centrifugal Fan

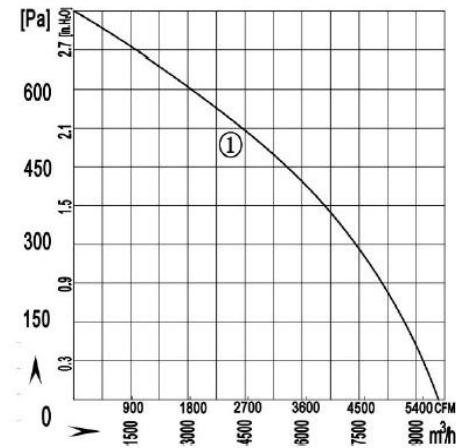
Ø500x282mm

- Dimension:

Unit: mm



- Performance:



## AC Backward Centrifugal Fan

Ø500x288mm

- Material: Sheet Aluminum
- Protection: IP54
- Insulation: Class F
- Certification: CE, RoHS
- Additional functions are optional



### ● Specification:

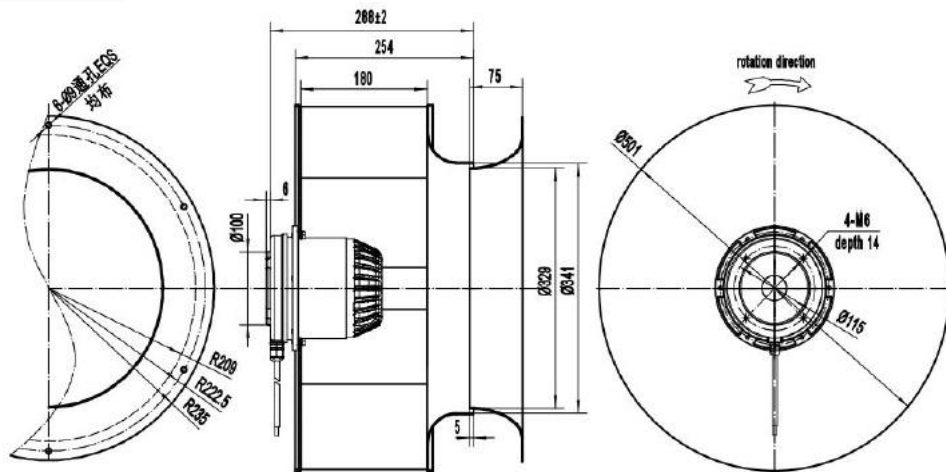
Model	Voltage	Frequency	Current	Power	Speed	Noise	Capacitor
	VAC	Hz	Amp	Watt	RPM	dB(A)	μF
CTA500288V3L-M	380	50/60	1.25/1.4	450/550	950/1050	63/65	-

# AC Backward Centrifugal Fan

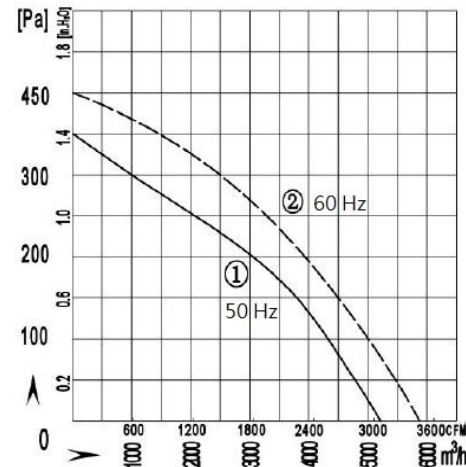
Ø500x288mm

- Dimension:

Unit: mm



- Performance:



## AC Backward Centrifugal Fan

Ø560x295mm

- Material: Sheet Aluminum
- Protection: IP54
- Insulation: Class F
- Certification: CE, RoHS
- Additional functions are optional



### ● Specification:

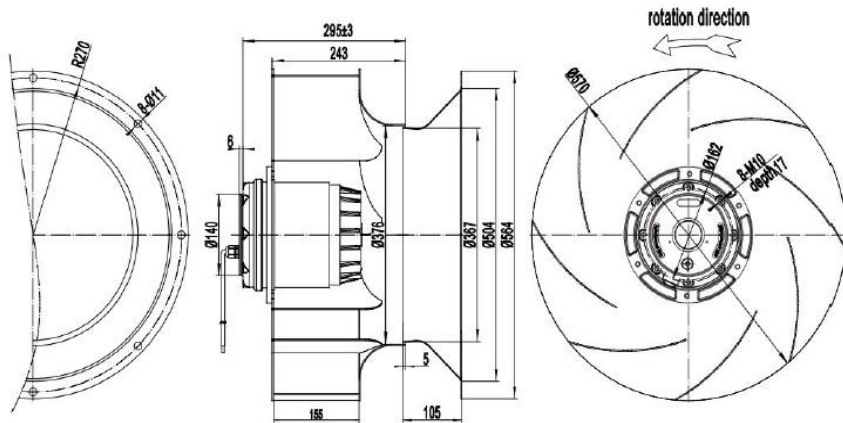
Model	Voltage	Frequency	Current	Power	Speed	Noise	Capacitor	Curve
	VAC	Hz	Amp	Watt	RPM	dB(A)	μF	
CTA560295V3L-M	380	50	4.5	2500	1340	85	-	①
CTA560295V3LR-M	380	50	1.8	900	910	73	-	②

# AC Backward Centrifugal Fan

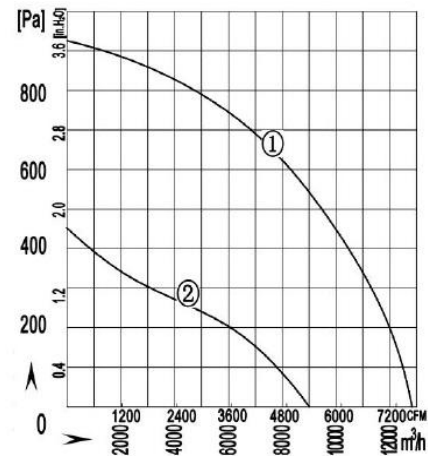
Ø560x295mm

- Dimension:

Unit: mm



- Performance:



## AC Backward Centrifugal Fan

Ø560x273mm

- Material: Sheet Aluminum
- Protection: IP54
- Insulation: Class F
- Certification: CE, RoHS
- Additional functions are optional



### ● Specification:

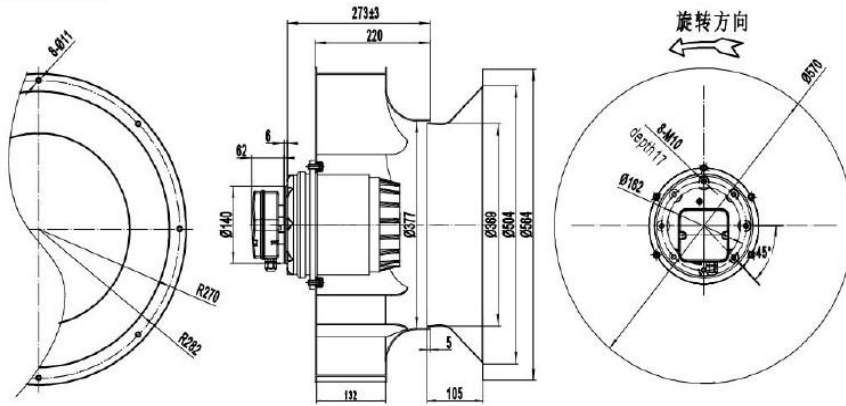
Model	Voltage	Frequency	Current	Power	Speed	Noise	Capacitor	Curve
	VAC	Hz	Amp	Watt	RPM	dB(A)	μF	
CTA560273V3L-M	380	50	4.5	2500	1350	85	-	①
CTA560273V3LR-M	380	50	1.8	900	910	73	-	②

# AC Backward Centrifugal Fan

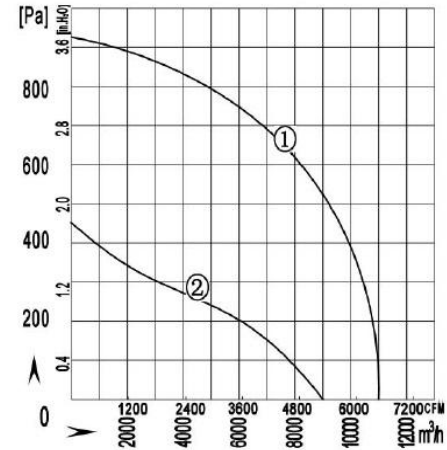
Ø560x273mm

- Dimension:

Unit: mm



- Performance:





## AC Backward Centrifugal Fan

Ø630x345mm

- Material: Sheet Aluminum
- Protection: IP54
- Insulation: Class F
- Certification: CE, RoHS
- Additional functions are optional



### ● Specification:

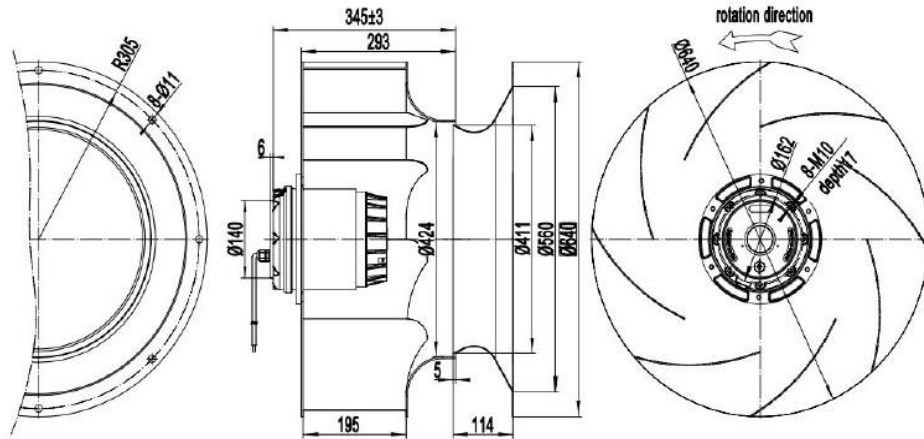
Model	Voltage	Frequency	Current	Power	Speed	Noise	Capacitor	Curve
	VAC	Hz	Amp	Watt	RPM	dB(A)	μF	
CTA6303345V3LR-M	380	50	3.8	1500	900	80	-	①
CTA630345V3LW-M	380	50	1.7	700	700	72	-	②

# AC Backward Centrifugal Fan

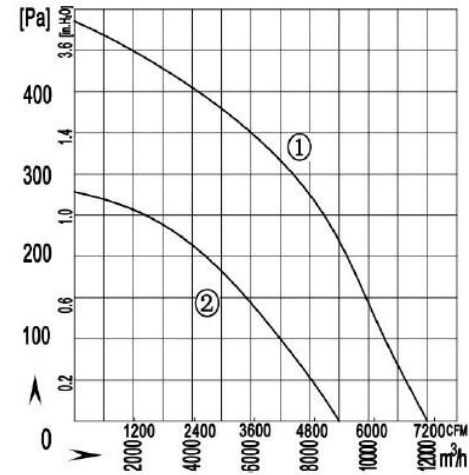
Ø630x345mm

- Dimension:

Unit: mm



- Performance:



## AC Forward Centrifugal Fan

Ø120x87mm

- Material: Metal
- Protection: IP44
- Insulation: Class F
- Certification: CE, RoHS
- Additional functions are optional



### • Specification:

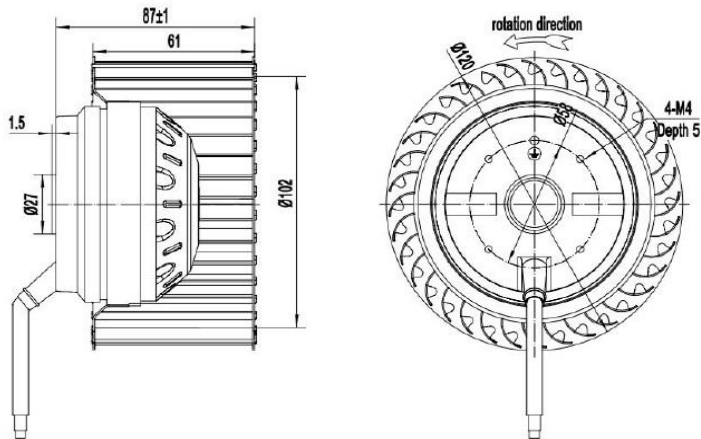
Model	Voltage	Frequency	Current	Power	Speed	Noise	Capacitor
	VAC	Hz	Amp	Watt	RPM	dB(A)	μF
CTFA12087V2M-M	220	50/60	0.25/0.3	50/63	2550/2800	51/53	1.5

# AC Forward Centrifugal Fan

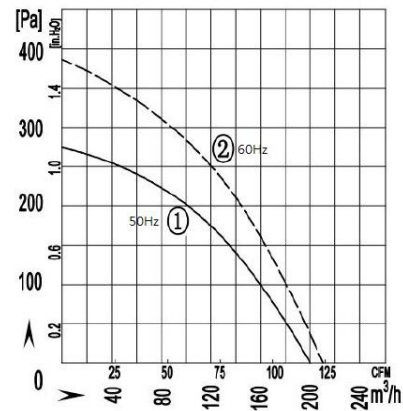
Ø120x87mm

- Dimension:

Unit: mm



- Performance:



## AC Forward Centrifugal Fan

Ø133x97mm

- Material: Metal
- Protection: IP44
- Insulation: Class F
- Certification: CE, RoHS
- Additional functions are optional



### • Specification:

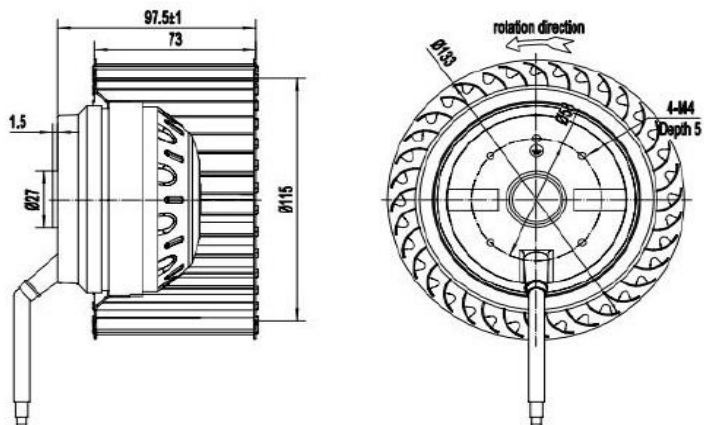
Model	Voltage	Frequency	Current	Power	Speed	Noise	Capacitor
	VAC	Hz	Amp	Watt	RPM	dB(A)	μF
CTFA13397V2M-M	220	50/60	0.32/0.4	70/85	2300/2350	61/63	2

# AC Forward Centrifugal Fan

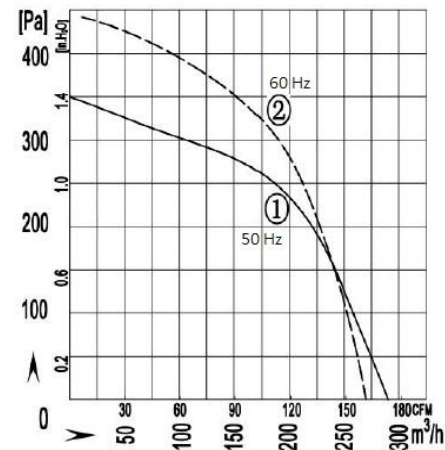
Ø133x97mm

## • Dimension:

Unit: mm



## • Performance:



## AC Forward Centrifugal Fan

Ø140x74mm

- Material: Metal
- Protection: IP44
- Insulation: Class F
- Certification: CE, RoHS
- Additional functions are optional



### • Specification:

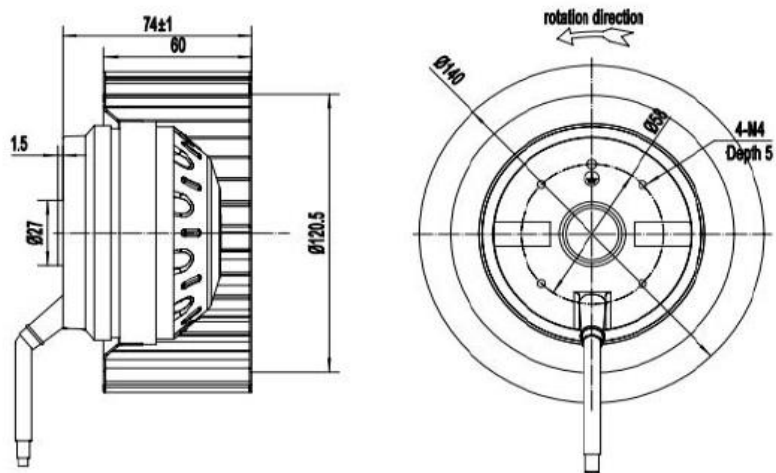
Model	Voltage	Frequency	Current	Power	Speed	Noise	Capacitor
	VAC	Hz	Amp	Watt	RPM	dB(A)	μF
CTFA14074V2L-M	220	50/60	0.42/0.47	100/110	1600/1500	52/58	2

# AC Forward Centrifugal Fan

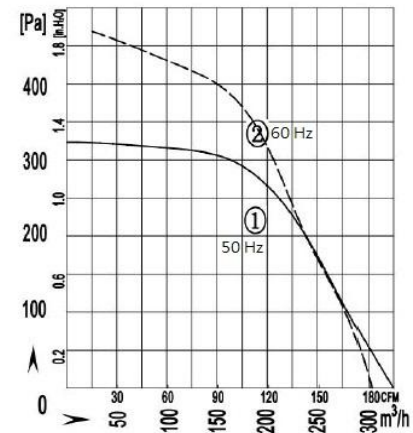
Ø140x74mm

- Dimension:

Unit: mm



- Performance:





## AC Forward Centrifugal Fan

Ø140x74mm - B Type

- Material: Metal
- Protection: IP44
- Insulation: Class F
- Certification: CE, RoHS
- Additional functions are optional



### • Specification:

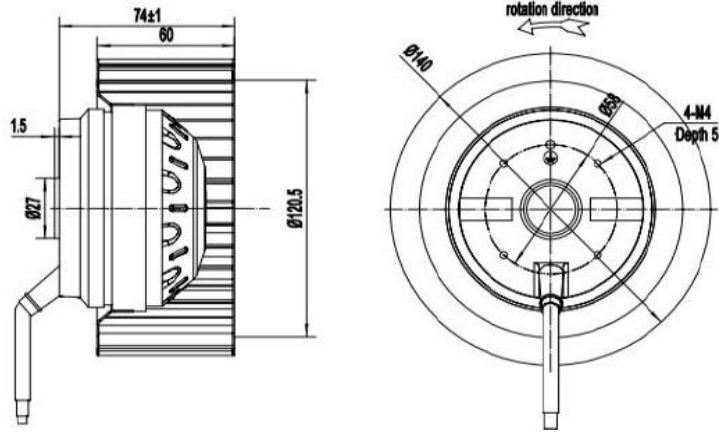
Model	Voltage	Frequency	Current	Power	Speed	Noise	Capacitor	Curve
	VAC	Hz	Amp	Watt	RPM	dB(A)	μF	
CTFA14074V2L-M2	220	50	0.42	100	1600	52	2	①
			0.3	65	1200	40		②
			0.2	40	900	32		③

# AC Forward Centrifugal Fan

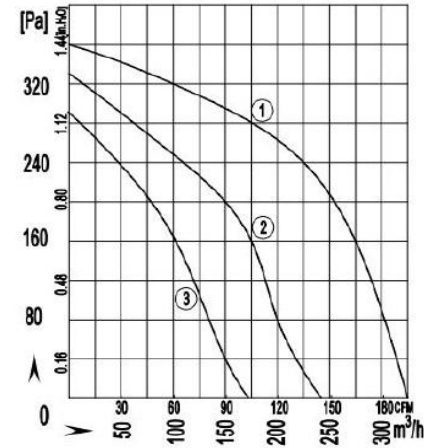
Ø140x74mm - B Type

- Dimension:

Unit: mm



- Performance:



## AC Forward Centrifugal Fan

Ø150x74mm

- Material: Metal
- Protection: IP44
- Insulation: Class F
- Certification: CE, RoHS
- Additional functions are optional



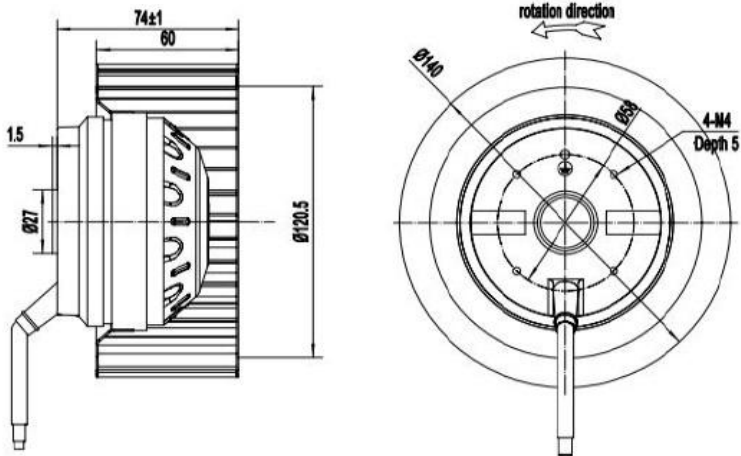
### • Specification:

Model	Voltage	Frequency	Current	Power	Speed	Noise	Capacitor	Curve
	VAC	Hz	Amp	Watt	RPM	dB(A)	μF	
CTFA15074V2M-M	220	50	0.65	135	2600	67	4	①
			0.82	180	2850	71		②

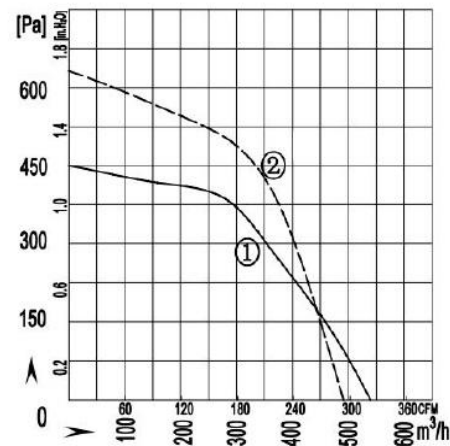
# AC Forward Centrifugal Fan

Ø150x74mm

- Dimension:  
Unit: mm



- Performance:



## AC Forward Centrifugal Fan

Ø160x85mm

- Material: Metal
- Protection: IP44
- Insulation: Class F
- Certification: CE, RoHS
- Additional functions are optional



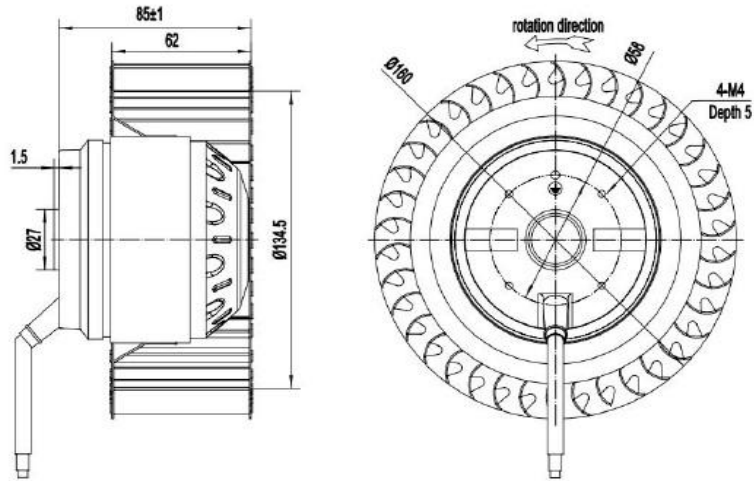
### • Specification:

Model	Voltage	Frequency	Current	Power	Speed	Noise	Capacitor
	VAC	Hz	Amp	Watt	RPM	dB(A)	μF
CTFA16085V2L-M	220	50	1	220	1800	68	4
CTFA16085V2LR-M	220	50	0.3	68	1400	56	2

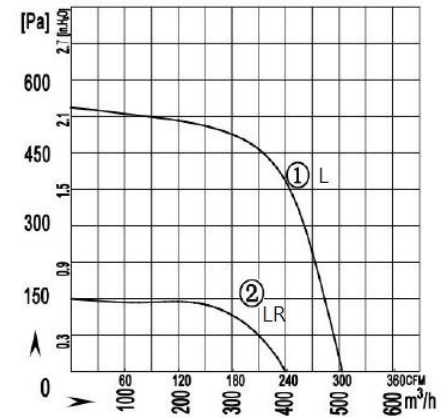
# AC Forward Centrifugal Fan

Ø160x85mm

- Dimension:  
Unit: mm



- Performance:



## AC Forward Centrifugal Fan

Ø180x128mm

- Material: Metal
- Protection: IP44
- Insulation: Class F
- Certification: CE, RoHS
- Additional functions are optional



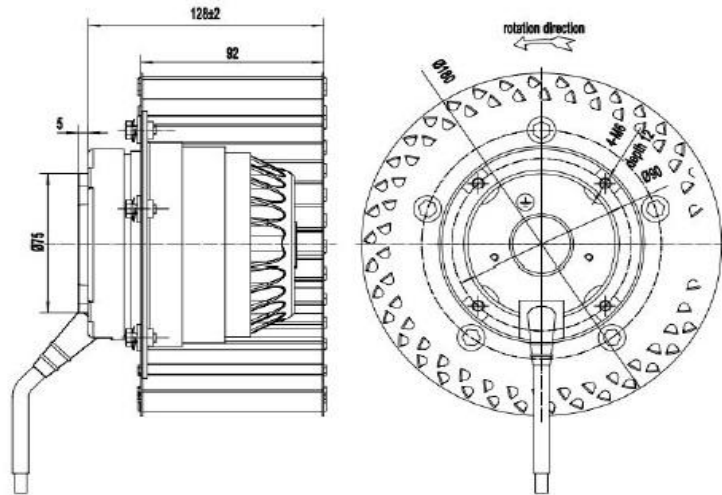
### • Specification:

Model	Voltage	Frequency	Current	Power	Speed	Noise	Capacitor
	VAC	Hz	Amp	Watt	RPM	dB(A)	μF
CTFA180128V2L-M	220	50	0.52	80	1450	66	3

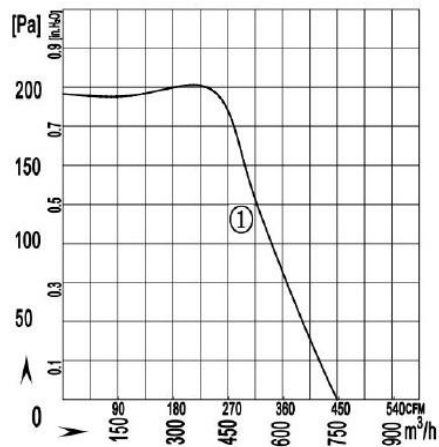
# AC Forward Centrifugal Fan

Ø180x128mm

- Dimension:  
Unit: mm



- Performance:





## AC Forward Centrifugal Fan

Ø200x59mm

- Material: Metal
- Protection: IP44
- Insulation: Class F
- Certification: CE, RoHS
- Additional functions are optional



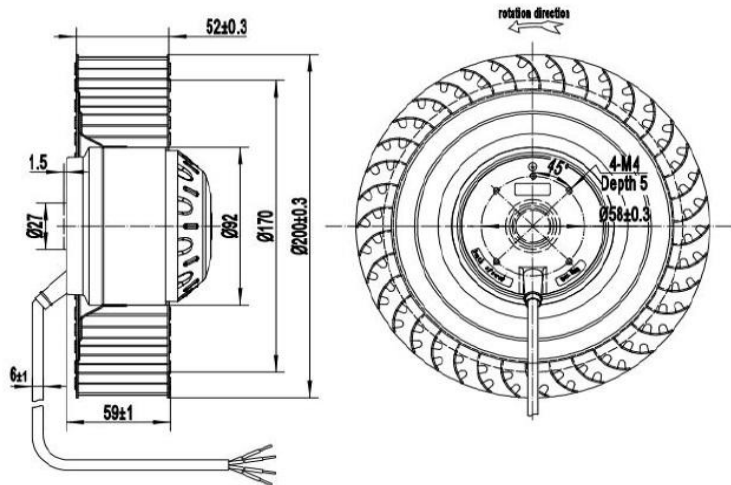
### • Specification:

Model	Voltage	Frequency	Current	Power	Speed	Noise	Capacitor
	VAC	Hz	Amp	Watt	RPM	dB(A)	μF
CTFA20059V2L-M	220	50	0.55	120	1300	58	3/500

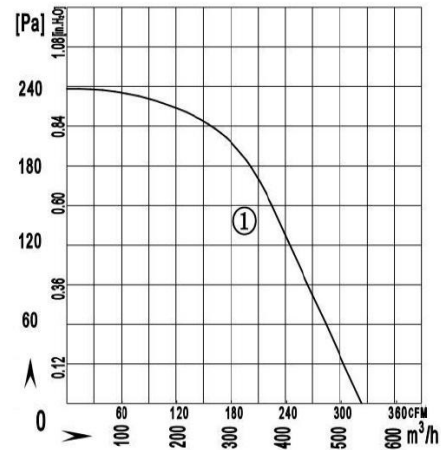
# AC Forward Centrifugal Fan

Ø200x59mm

- Dimension:  
Unit: mm



- Performance:



## AC Forward Centrifugal Fan

Ø200x137mm

- Material: Metal
- Protection: IP44
- Insulation: Class F
- Certification: CE, RoHS
- Additional functions are optional



### • Specification:

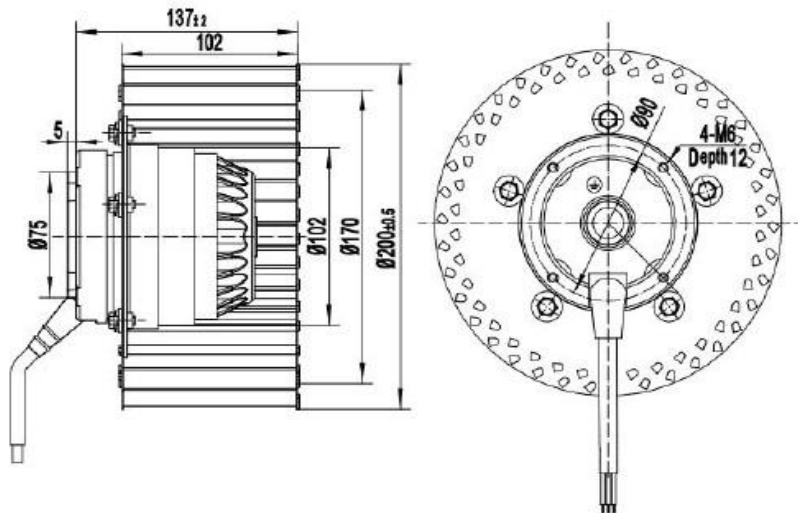
Model	Voltage	Frequency	Current	Power	Speed	Noise	Capacitor
	VAC	Hz	Amp	Watt	RPM	dB(A)	μF
CTFA200137V2L-M	220	50	0.95	200	1300	64	6
CTFA200137V3L-M	380	50	0.6	200	1300	64	-

# AC Forward Centrifugal Fan

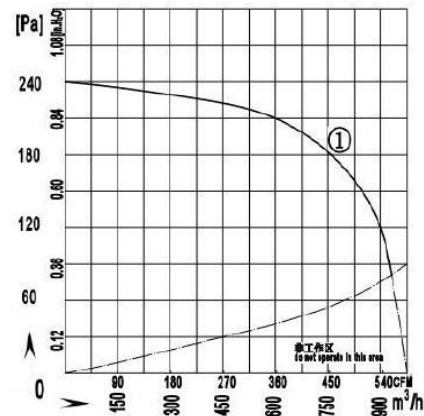
Ø200x137mm

- Dimension:

Unit: mm



- Performance:



## AC Forward Centrifugal Fan

Ø225x128mm

- Material: Metal
- Protection: IP44
- Insulation: Class F
- Certification: CE, RoHS
- Additional functions are optional



### • Specification:

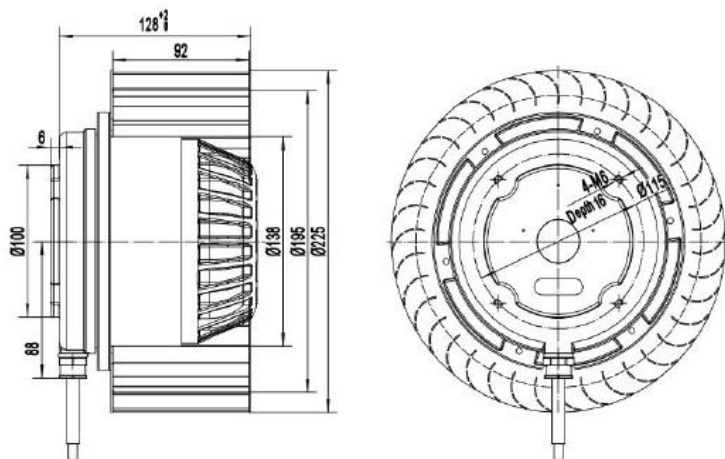
Model	Voltage	Frequency	Current	Power	Speed	Noise	Capacitor
	VAC	Hz	Amp	Watt	RPM	dB(A)	μF
CTFA225128V2L-M	220	50	1.9	400	1390	70	12
CTFA225128V3L-M	380	50	1.1	400	1390	70	-

# AC Forward Centrifugal Fan

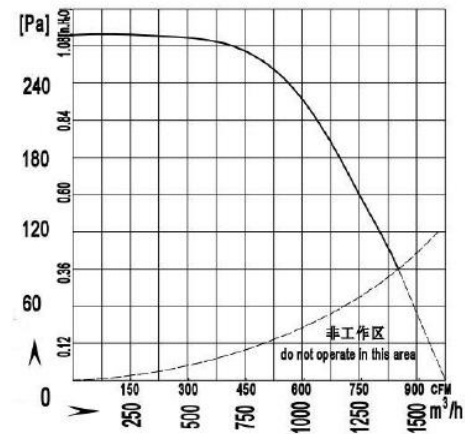
Ø225x128mm

- Dimension:

Unit: mm



- Performance:



## AC Forward Centrifugal Fan

Ø250x140mm

- Material: Metal
- Protection: IP44
- Insulation: Class F
- Certification: CE, RoHS
- Additional functions are optional



### • Specification:

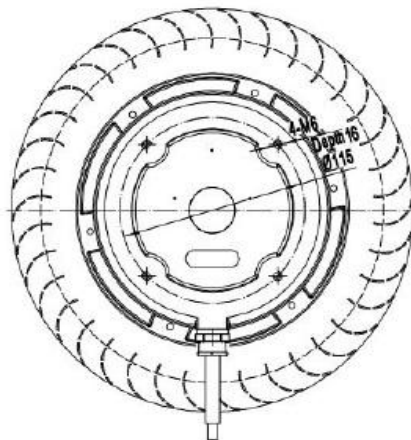
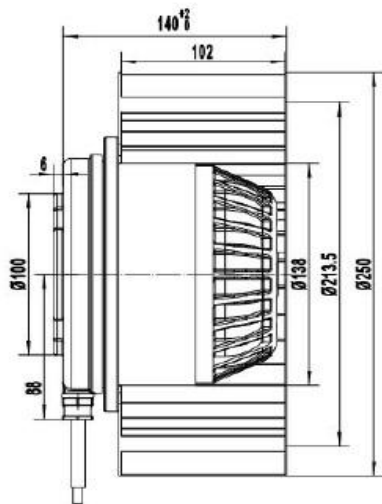
Model	Voltage	Frequency	Current	Power	Speed	Noise	Capacitor	Curve
	VAC	Hz	Amp	Watt	RPM	dB(A)	µF	
CTFA250140V2L-M	220	50	3	630	1300	72	12	①
CTFA250140V2LW-M	220	50	1.6	340	900	66	8	②
CTFA250140V3LR-M	380	50	1.2	630	1300	72	-	①
CTFA250140V3L-M	380	50	0.73	340	1350	66	-	②

# AC Forward Centrifugal Fan

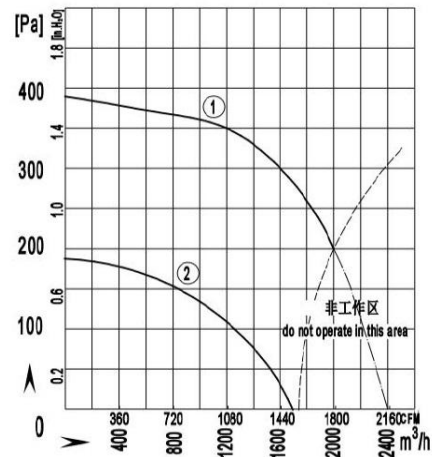
Ø250x140mm

## • Dimension:

Unit: mm



## • Performance:





## AC Forward Centrifugal Fan

Ø250x140mm - B Type

- Material: Metal
- Protection: IP44
- Insulation: Class F
- Certification: CE, RoHS
- Additional functions are optional



### • Specification:

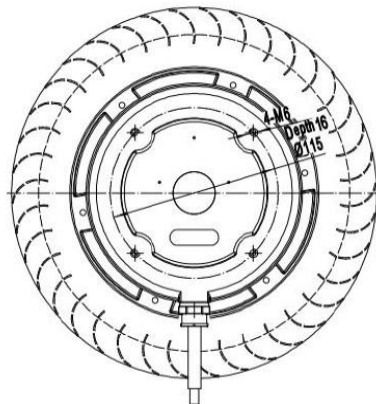
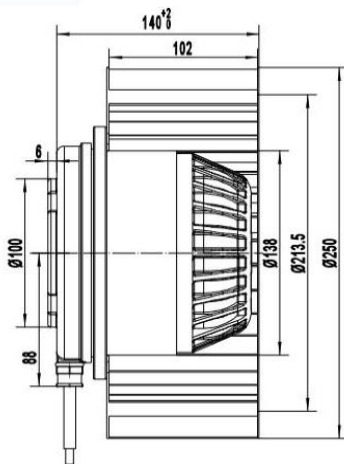
Model	Voltage	Frequency	Current	Power	Speed	Noise	Capacitor
	VAC	Hz	Amp	Watt	RPM	dB(A)	μF
CTFA250140V3L-M2	380	50	1.6	850	1350	70	-

# AC Forward Centrifugal Fan

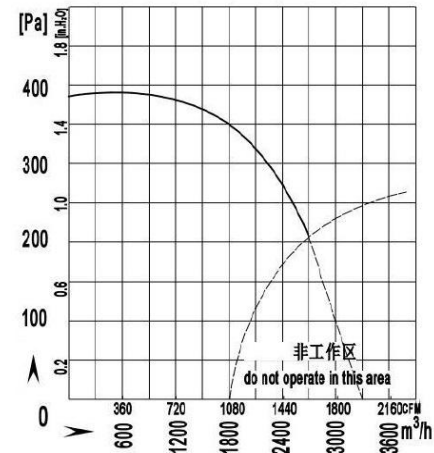
Ø250x140mm - B Type

## • Dimension:

Unit: mm



## • Performance:



## AC Forward Centrifugal Fan

Ø280x198mm

- Material: Metal
- Protection: IP44
- Insulation: Class F
- Certification: CE, RoHS
- Additional functions are optional



### • Specification:

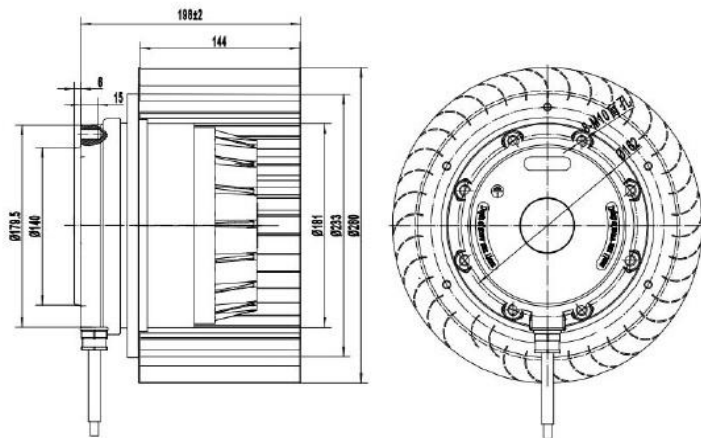
Model	Voltage	Frequency	Current	Power	Speed	Noise	Capacitor
	VAC	Hz	Amp	Watt	RPM	dB(A)	µF
CTFA280198V2LW-M	220	50	2.4	550	750	62	8
CTFA280198V3LW-M	380	50	1.8	550	750	62	-

# AC Forward Centrifugal Fan

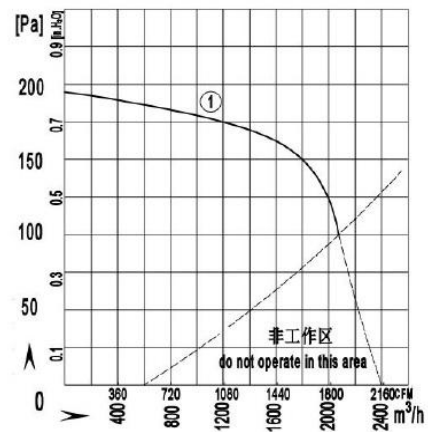
Ø280x198mm

- Dimension:

Unit: mm



- Performance:



## AC Forward Centrifugal Fan

Ø280x198mm – B Type

- Material: Metal
- Protection: IP44
- Insulation: Class F
- Certification: CE, RoHS
- Additional functions are optional



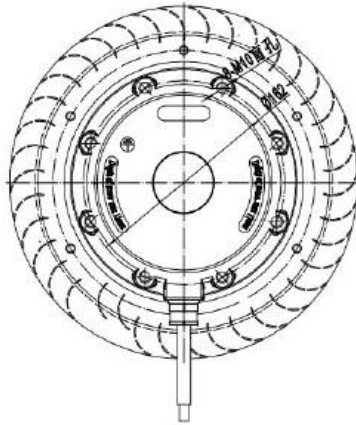
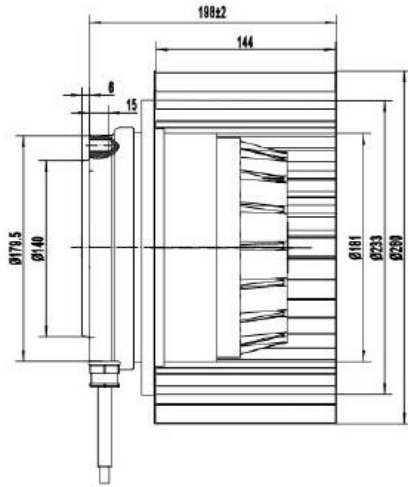
### • Specification:

Model	Voltage	Frequency	Current	Power	Speed	Noise	Capacitor
	VAC	Hz	Amp	Watt	RPM	dB(A)	μF
CTFA280198V3L-M2	380	50	2.5	1400	1400	80	-

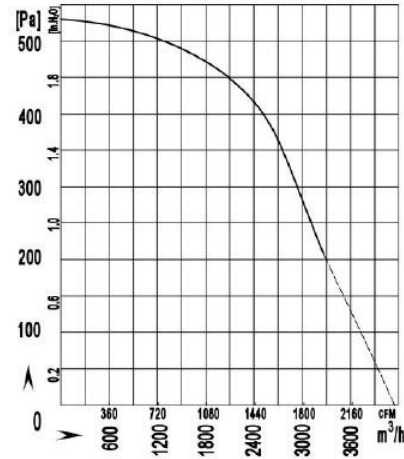
# AC Forward Centrifugal Fan

Ø280x198mm - B Type

- Dimension:  
Unit: mm



- Performance:



## AC Single Inlet Blower

Ø108x158mm

- Material: Metal
- Protection: IP44
- Insulation: Class F
- Certification: CE, RoHS
- Additional functions are optional



### ● Specification:

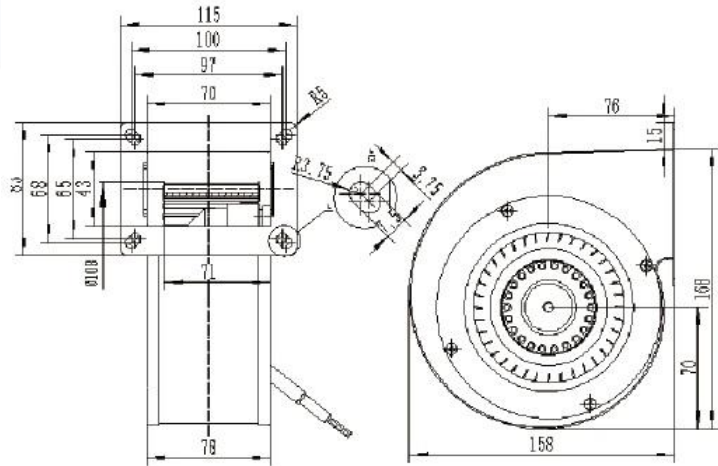
Model	Voltage	Frequency	Current	Power	Speed	Noise	Capacitor
	VAC	Hz	Amp	Watt	RPM	dB(A)	μF
CTBA108158V2M-L	230	50/60	0.18/0.25	33/35	1850/2200	56/58	1/500

# AC Single Inlet Blower

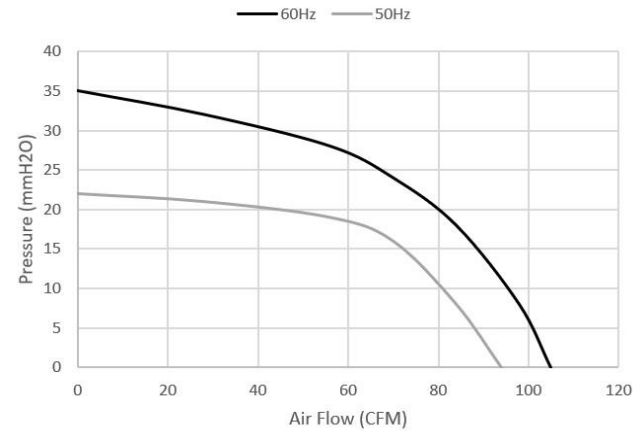
Ø120x174mm

- Dimension:

Unit: mm



- Performance:





## AC Single Inlet Blower

Ø120x174mm

- Material: Metal
- Protection: IP44
- Insulation: Class F
- Certification: CE, RoHS
- Additional functions are optional



### ● Specification:

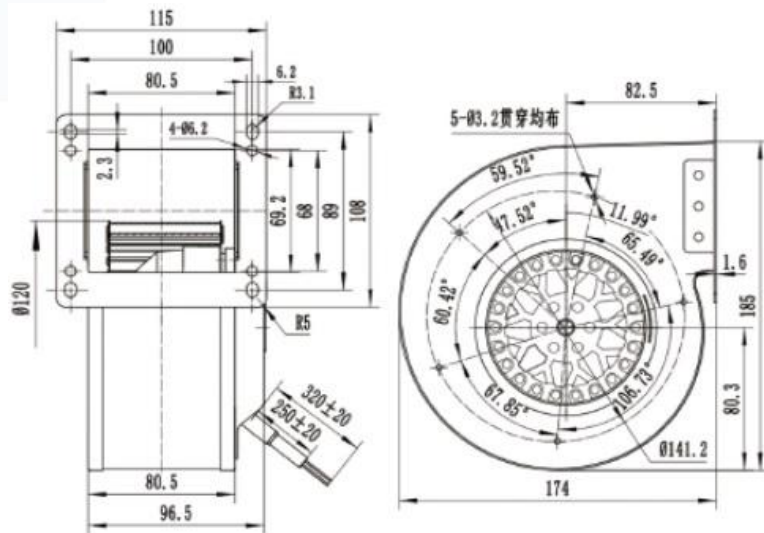
Model	Voltage	Frequency	Current	Power	Speed	Noise	Capacitor
	VAC	Hz	Amp	Watt	RPM	dB(A)	μF
CTBA120174V1H-L	115	50/60	0.7/0.8	76/95	2400/2500	56/60	8/250
CTBA120174V2H-L	230	50/60	0.42/0.48	80/100	2400/2500	56/60	2.2/500
CTBA120174V3H-L	380	50	0.3	105	2400	56	-

# AC Single Inlet Blower

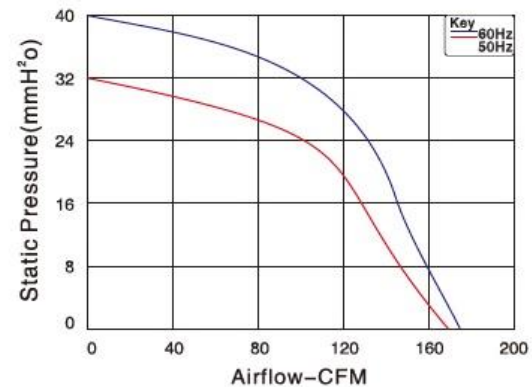
Ø120x174mm

- Dimension:

Unit: mm



- Performance:



## AC Single Inlet Blower

Ø120x160mm

- Material: Metal
- Protection: IP44
- Insulation: Class F
- Certification: CE, RoHS
- Additional functions are optional



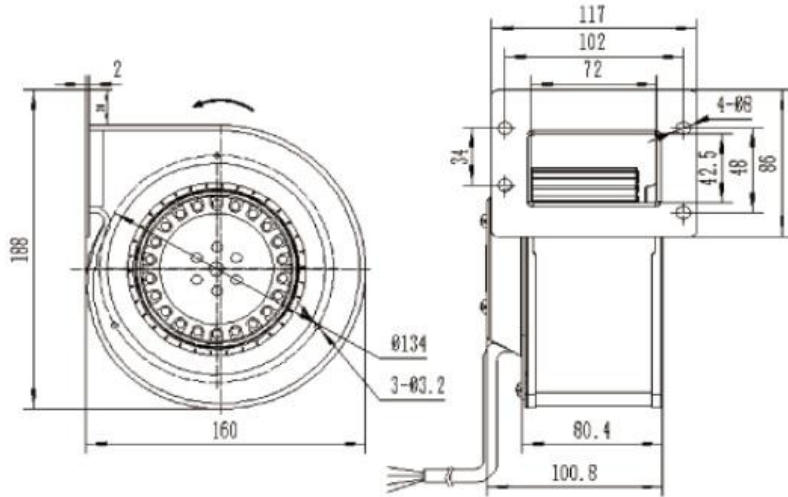
### • Specification:

Model	Voltage	Frequency	Current	Power	Speed	Noise	Capacitor
	VAC	Hz	Amp	Watt	RPM	dB(A)	μF
CTBA120160V1H-L	115	50/60	0.7/0.8	80/90	2500/2600	56/60	8/250
CTBA120160V2H-L	230	50/60	0.42/0.48	80/100	2500/2600	56/60	2.2/630
CTBA120160V3H-L	380	50	0.3	105	2400	56	-

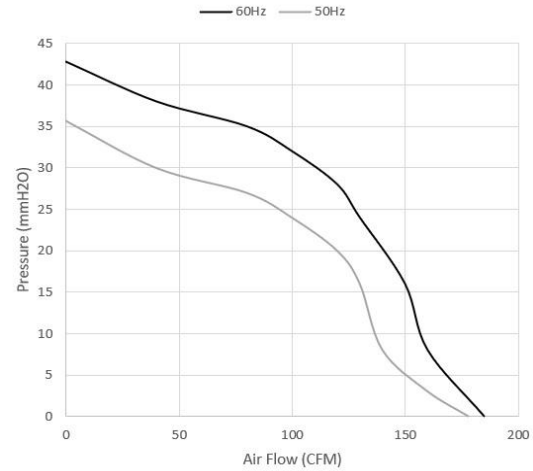
# AC Single Inlet Blower

Ø120x160mm

- Dimension:  
Unit: mm



- Performance:



## AC Single Inlet Blower

Ø133x175mm

- Material: Metal
- Protection: IP44
- Insulation: Class F
- Certification: CE, RoHS
- Additional functions are optional



### ● Specification:

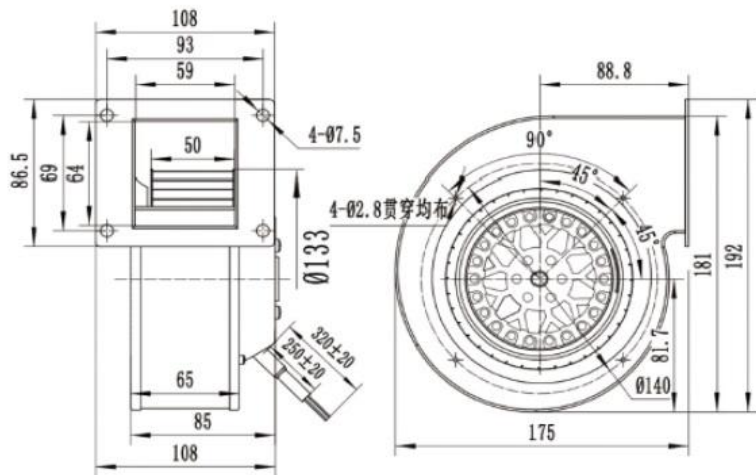
Model	Voltage	Frequency	Current	Power	Speed	Noise	Capacitor
	VAC	Hz	Amp	Watt	RPM	dB(A)	μF
CTBA133175V1H-L	115	50/60	0.55/0.7	78/100	2400/2600	62/64	8/250
CTBA133175V2H-L	230	50/60	0.45/0.55	80/100	2400/2600	62/64	2.2/500
CTBA133175V3H-L	380	50	0.15	40	2400	62	-

# AC Single Inlet Blower

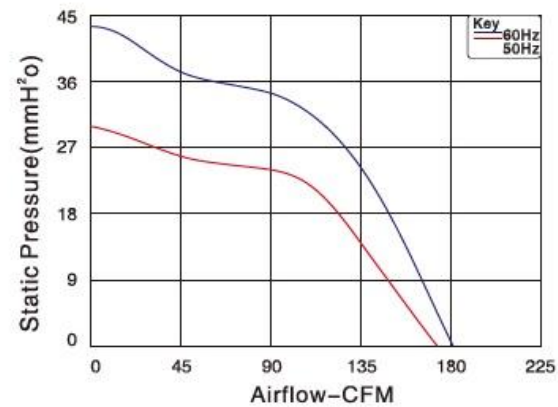
Ø133x175mm

- Dimension:

Unit: mm



- Performance:



## AC Single Inlet Blower

Ø133x175mm - B Type

- Material: Metal
- Protection: IP44
- Insulation: Class F
- Certification: CE, RoHS
- Additional functions are optional



### ● Specification:

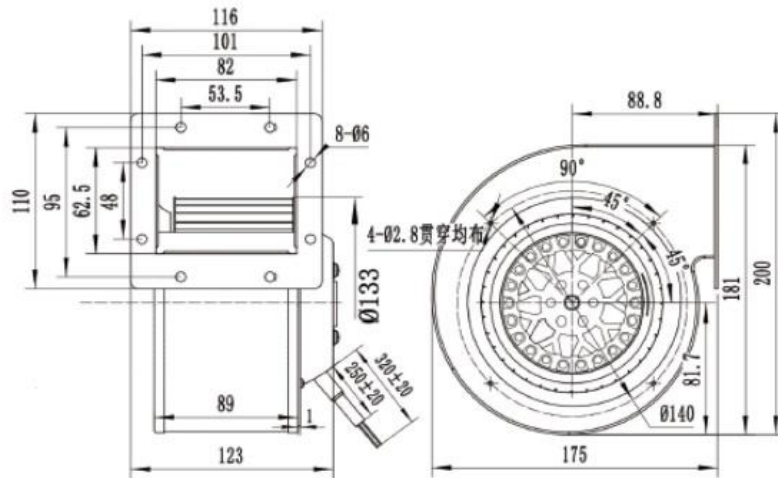
Model	Voltage	Frequency	Current	Power	Speed	Noise	Capacitor
	VAC	Hz	Amp	Watt	RPM	dB(A)	μF
CTSB133175V1H-L2	115	50/60	1.5/1.7	140/170	2550/2750	61/63	10/500
CTSB133175V2H-L2	230	50/60	0.5/0.6	110/130	2550/2750	61/63	4/500

# AC Single Inlet Blower

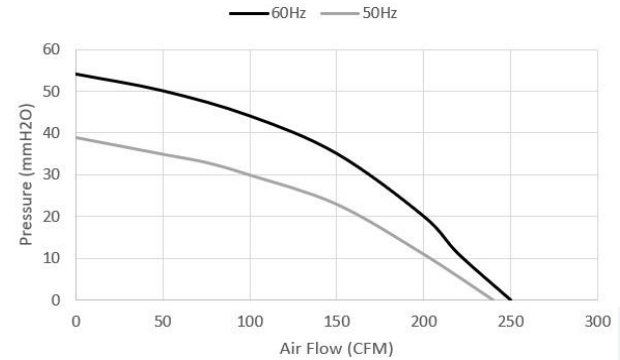
Ø133x175mm - B Type

- Dimension:

Unit: mm



- Performance:





## AC Single Inlet Blower

Ø140x220mm

- Material: Metal
- Protection: IP44
- Insulation: Class F
- Certification: CE, RoHS
- Additional functions are optional



### ● Specification:

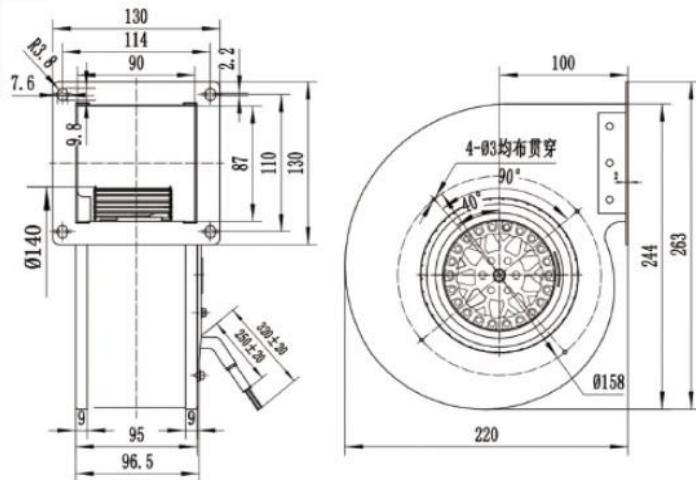
Model	Voltage	Frequency	Current	Power	Speed	Noise	Capacitor
	VAC	Hz	Amp	Watt	RPM	dB(A)	μF
CTBA140220V2M-L	230	50/60	0.52/0.56	160/190	1750/1610	60/59	4/500

# AC Single Inlet Blower

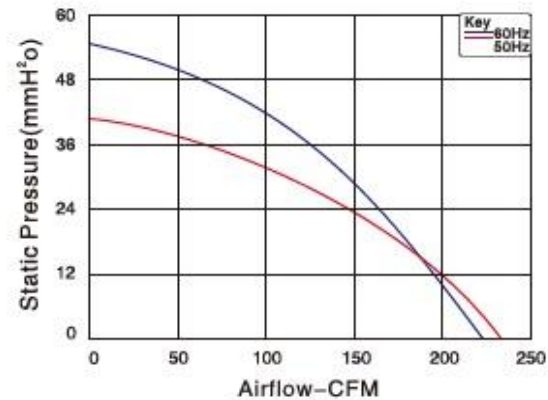
Ø140x220mm

- Dimension:

Unit: mm



- Performance:



## AC Single Inlet Blower

Ø150x210mm

- Material: Metal
- Protection: IP44
- Insulation: Class F
- Certification: CE, RoHS
- Additional functions are optional



### ● Specification:

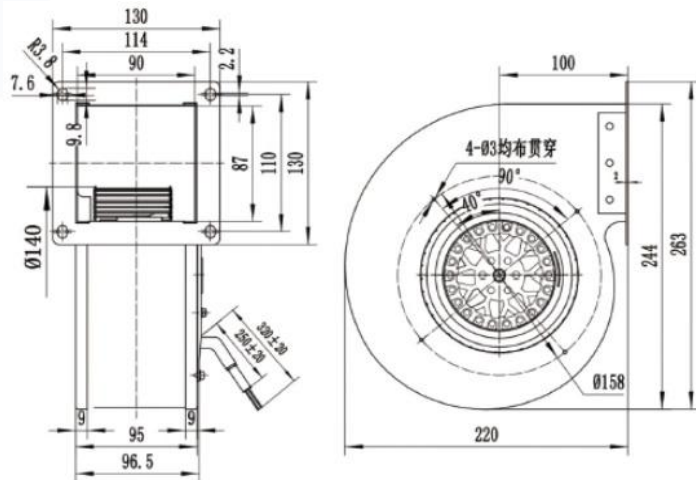
Model	Voltage	Frequency	Current	Power	Speed	Noise	Capacitor
	VAC	Hz	Amp	Watt	RPM	dB(A)	μF
CTBA150210V1H-L	115	50/60	1.68/2	180/220	2400/2500	68/70	20/250
CTBA150210V2H-L	230	50/60	0.68/0.9	150/200	2400/2500	68/70	4/4500
CTBA150210V3H-L	380	50/60	1.1/1.2	132/246	2400/2500	68/70	4/4500

# AC Single Inlet Blower

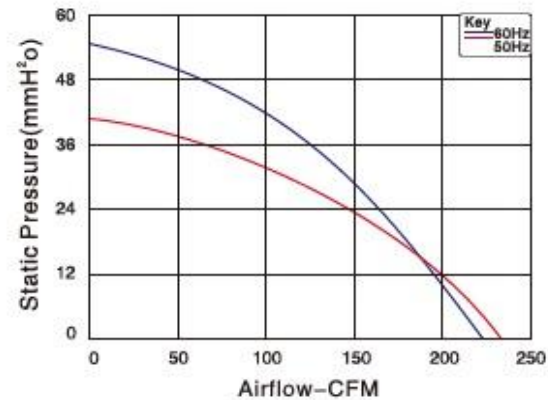
Ø150x210mm

- Dimension:

Unit: mm



- Performance:



## AC Single Inlet Blower

Ø160x220mm

- Material: Metal
- Protection: IP44
- Insulation: Class F
- Certification: CE, RoHS
- Additional functions are optional



### • Specification:

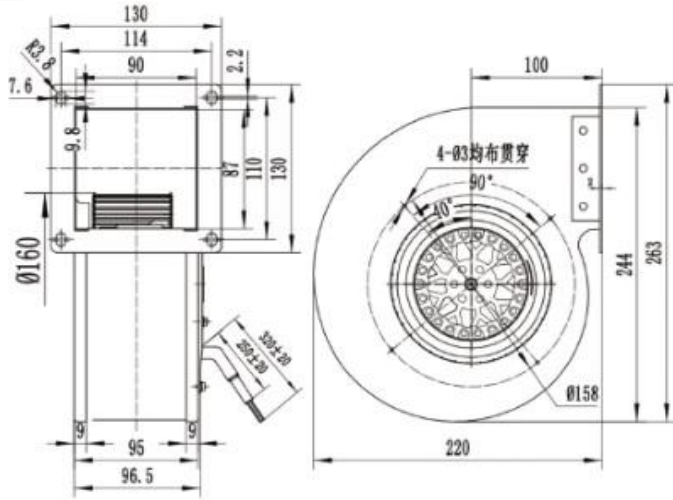
Model	Voltage	Frequency	Current	Power	Speed	Noise	Capacitor
	VAC	Hz	Amp	Watt	RPM	dB(A)	μF
CTBA160220V1M-L	115	50/60	1.3/1.57	170/207	1800/2200	65/68	20/250
CTBA160220V2M-L	230	50/60	0.63/0.73	130/175	1800/2200	65/68	4/630

# AC Single Inlet Blower

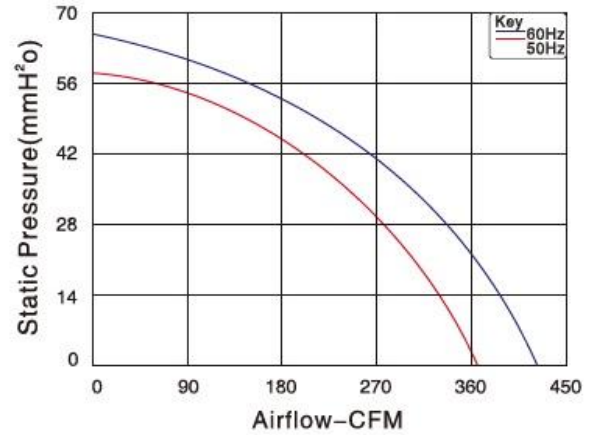
Ø160x220mm

- Dimension:

Unit: mm



- Performance:



## AC Single Inlet Blower

Ø180x261mm

- Material: Metal
- Protection: IP44
- Insulation: Class F
- Certification: CE, RoHS
- Additional functions are optional



### ● Specification:

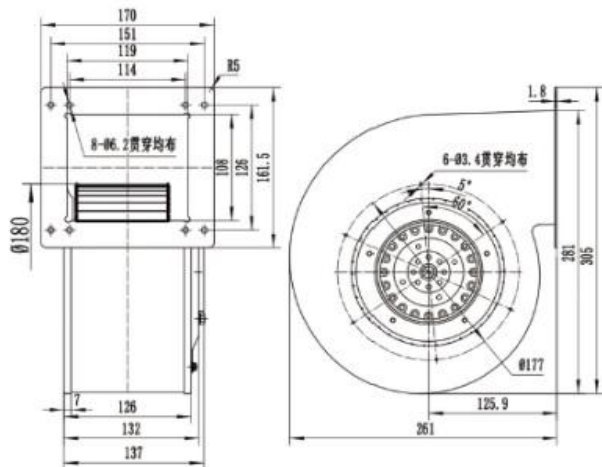
Model	Voltage	Frequency	Current	Power	Speed	Noise	Capacitor
	VAC	Hz	Amp	Watt	RPM	dB(A)	μF
CTBA180261V1L-A	115	50/60	1.7/1.4	130/160	1350/1550	65/67	24/450
CTBA180261V2L-A	220	50/60	0.6/0.9	135/180	1350/1550	65/67	5/500
CTBA180261V3L-A	380	50/60	0.3/0.25	135/155	1350/1550	65/67	-

# AC Single Inlet Blower

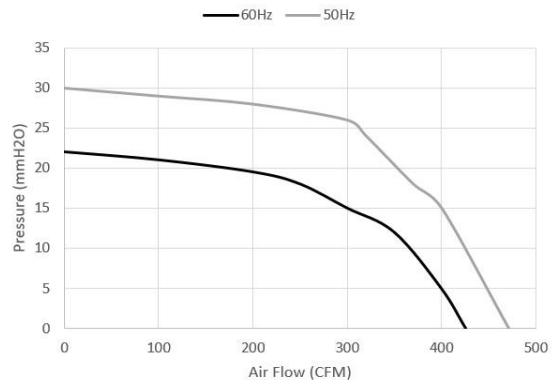
Ø180x261mm

- Dimension:

Unit: mm



- Performance:





## AC Double Inlet Blower

Ø97x126mm

- Material: Metal
- Protection: IP44
- Insulation: Class F
- Certification: CE, RoHS
- Additional functions are optional



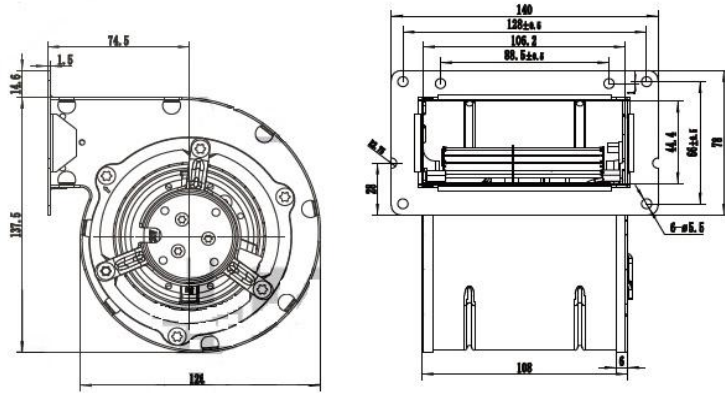
### ● Specification:

Model	Voltage	Frequency	Current	Power	Speed	Noise	Capacitor
	VAC	Hz	Amp	Watt	RPM	dB(A)	μF
CTBA97126V2L-L	230	50/60	0.38/0.42	80/90	1550/1450	53/52	2.2/500

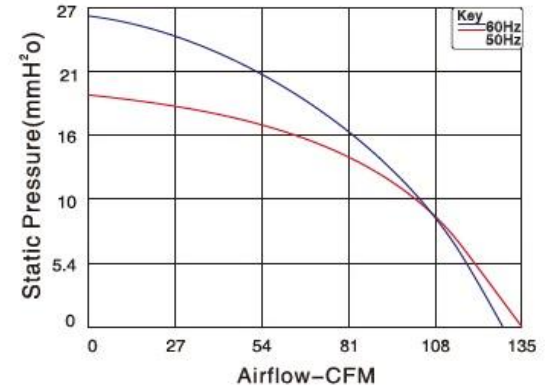
# AC Double Inlet Blower

Ø97x126mm

- Dimension:  
Unit: mm



- Performance:



## AC Double Inlet Blower

Ø120x159mm

- Material: Metal
- Protection: IP44
- Insulation: Class F
- Certification: CE, RoHS
- Additional functions are optional



### ● Specification:

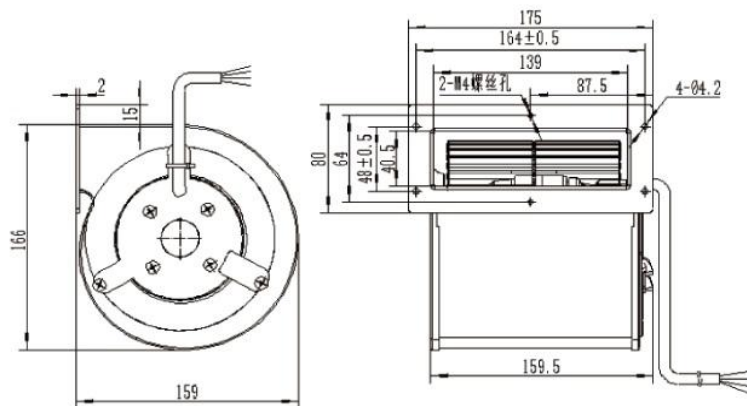
Model	Voltage	Frequency	Current	Power	Speed	Noise	Capacitor
	VAC	Hz	Amp	Watt	RPM	dB(A)	μF
CTBA120159V2H-L	230	50/60	0.61/0.73	127/168	2400	66	4/630

# AC Double Inlet Blower

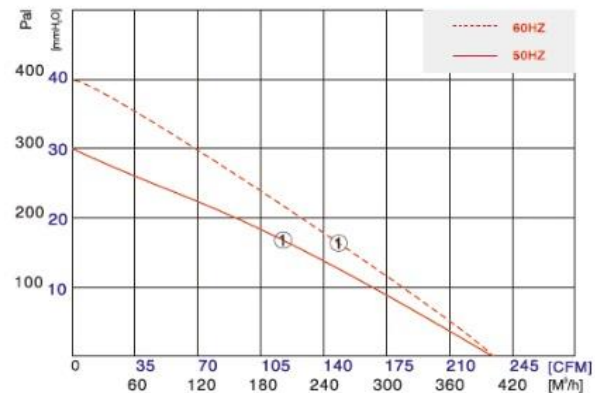
Ø120x159mm

- Dimension:

Unit: mm



- Performance:



## AC Double Inlet Blower

Ø120x126mm

- Material: Metal
- Protection: IP44
- Insulation: Class F
- Certification: CE, RoHS
- Additional functions are optional



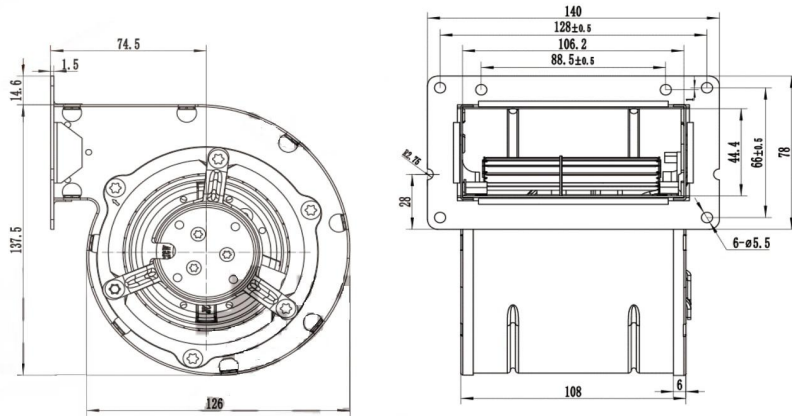
### • Specification:

Model	Voltage	Frequency	Current	Power	Speed	Noise	Capacitor
	VAC	Hz	Amp	Watt	RPM	dB(A)	μF
CTBA120126V2L-L	230	50/60	0.38/0.42	80/90	1550/1450	53/52	2.2/500

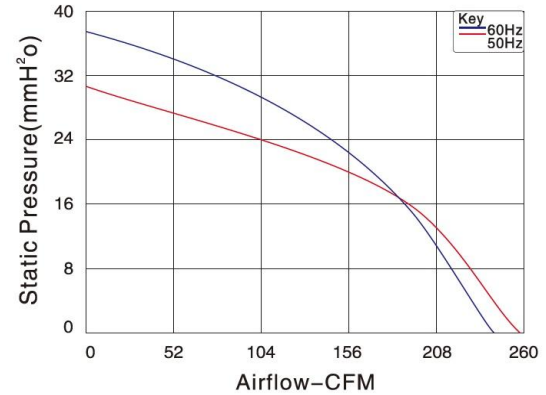
# AC Double Inlet Blower

Ø120x126mm

- Dimension:  
Unit: mm



- Performance:



## AC Double Inlet Blower

Ø130x202mm

- Material: Metal
- Protection: IP44
- Insulation: Class F
- Certification: CE, RoHS
- Additional functions are optional



### ● Specification:

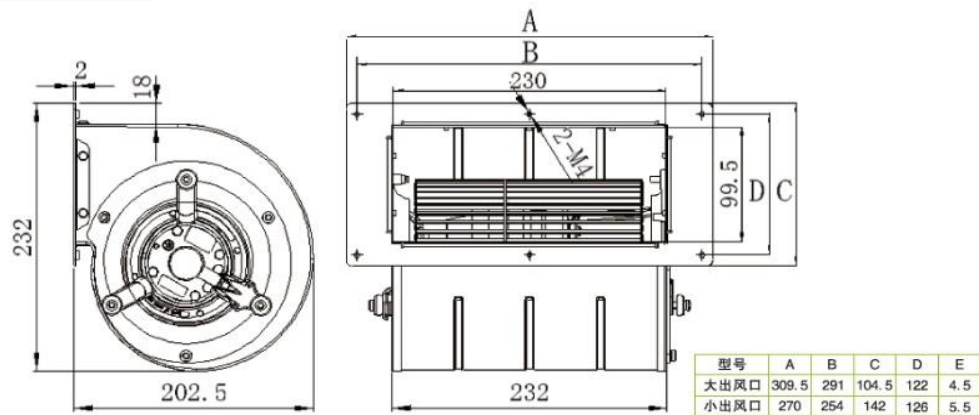
Model	Voltage	Frequency	Current	Power	Speed	Noise	Capacitor
	VAC	Hz	Amp	Watt	RPM	dB(A)	μF
CTBA133202V1L-L	115	60	1.5	200	1350	56	20/450
CTBA133202V2L-L	230	50/60	0.8/1.3	180/220	1350/1150	58/59	5/500
CTBA133202V3L-L	380	50	0.3	100	1350	55	-
CTBA133202V4L-L	440	50	0.3	100	1350	56	-

# AC Double Inlet Blower

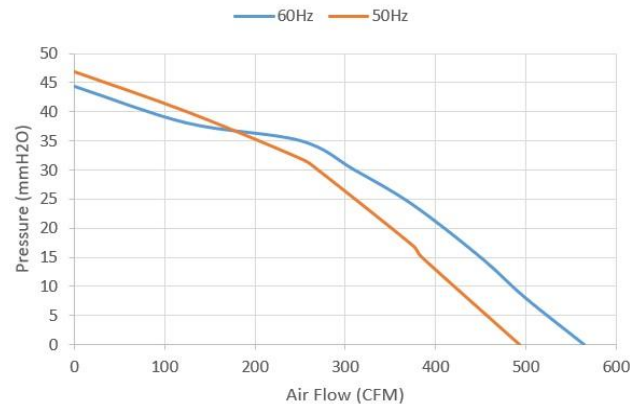
Ø133x202mm

- Dimension:

Unit: mm



- Performance:





## AC Double Inlet Blower

Ø133x172mm

- Material: Metal
- Protection: IP44
- Insulation: Class F
- Certification: CE, RoHS
- Additional functions are optional



### • Specification:

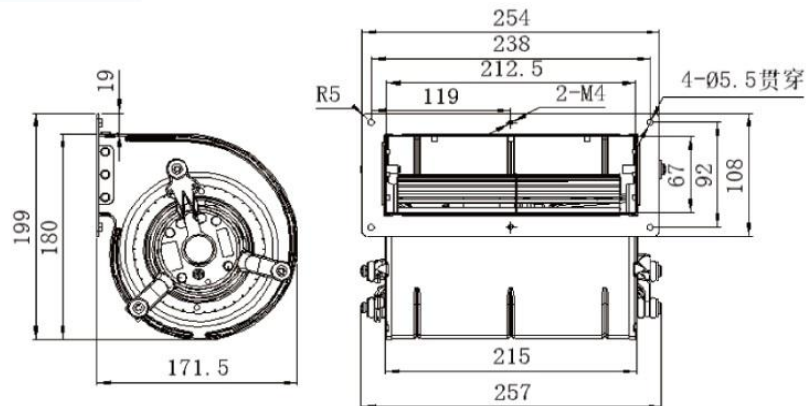
Model	Voltage	Frequency	Current	Power	Speed	Noise	Capacitor
	VAC	Hz	Amp	Watt	RPM	dB(A)	μF
CTBA133172V2L-L	230	50/60	0.85/0.95	190/220	1550/1800	56/59	5/500
CTBA133172V3L-L	380	50	0.42	115	1550	56	-

## AC Double Inlet Blower

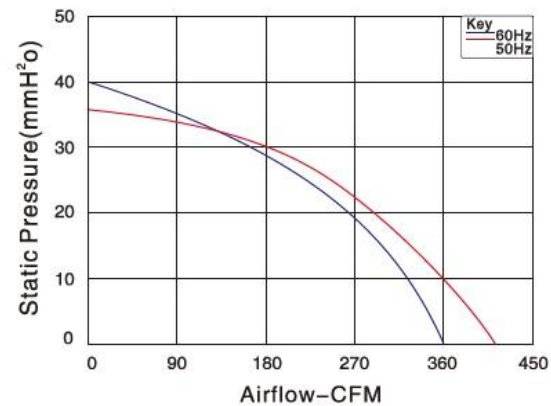
Ø133x172mm

- Dimension:

Unit: mm



- Performance:



## AC Double Inlet Blower

Ø146x250mm

- Material: Metal
- Protection: IP44
- Insulation: Class F
- Certification: CE, RoHS
- Additional functions are optional



### ● Specification:

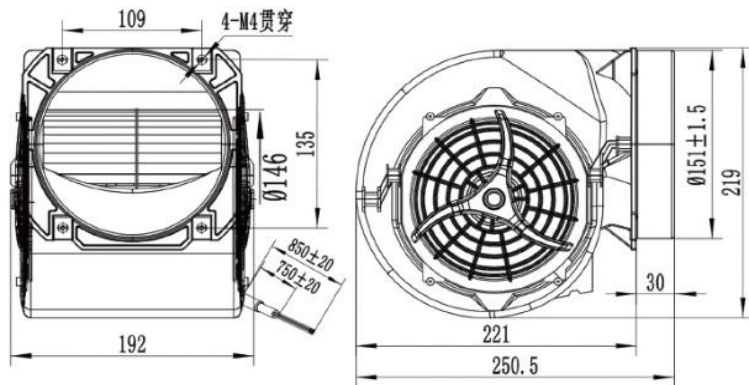
Model	Voltage	Frequency	Current	Power	Speed	Noise	Capacitor
	VAC	Hz	Amp	Watt	RPM	dB(A)	μF
CTBA146250V1L-L	115	60	3	300	1800	66	25/450
CTBA146250V2L-L	230	50	1.2	300	1800	66	10/500

## AC Double Inlet Blower

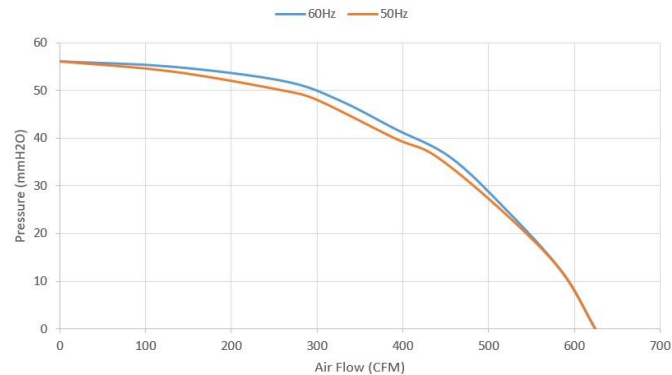
Ø146x250mm

- Dimension:

Unit: mm



- Performance:



## AC Double Inlet Blower

Ø146x202mm

- Material: Metal
- Protection: IP44
- Insulation: Class F
- Certification: CE, RoHS
- Additional functions are optional



### ● Specification:

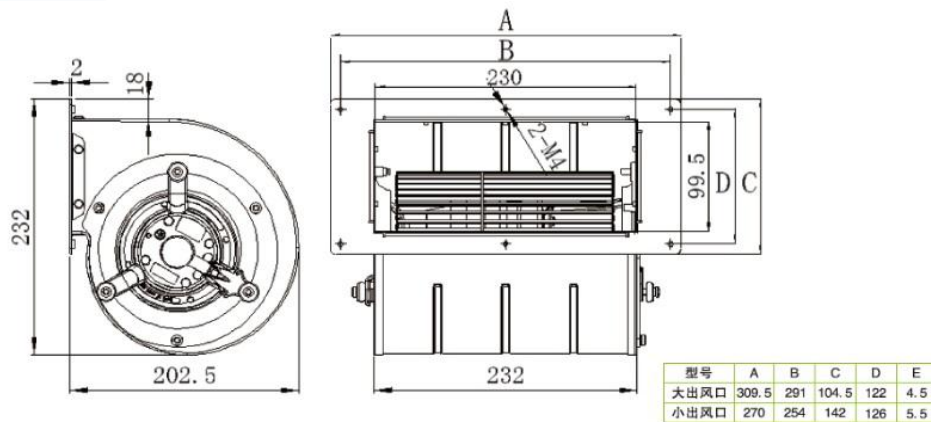
Model	Voltage	Frequency	Current	Power	Speed	Noise	Capacitor	Curve
	VAC	Hz	Amp	Watt	RPM	dB(A)	μF	
CTBA146202V2L-L	230	50	1.1	222	1250	62	5/500	①
CTBA146202V2LR-L	230	50	1.25	274	1450	67	8/500	②
CTBA146202V2LW-L	230	50	1.5	331	1650	69	8/500	③

# AC Double Inlet Blower

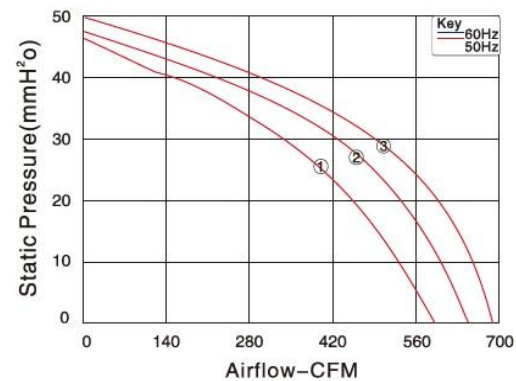
Ø146x202mm

- Dimension:

Unit: mm



- Performance:



## AC Double Inlet Blower

Ø160x225mm

- Material: Metal
- Protection: IP44
- Insulation: Class F
- Certification: CE, RoHS
- Additional functions are optional



### • Specification:

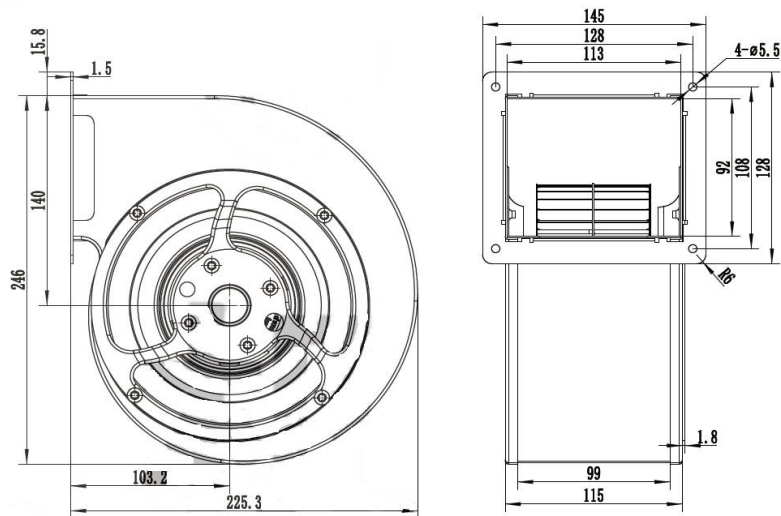
Model	Voltage	Frequency	Current	Power	Speed	Noise	Capacitor
	VAC	Hz	Amp	Watt	RPM	dB(A)	µF
CTBA160225V2L-L	230	50	1.1	241	1400	60	5/500
			0.9	185	1150	55	
			0.7	137	800	51	

# AC Double Inlet Blower

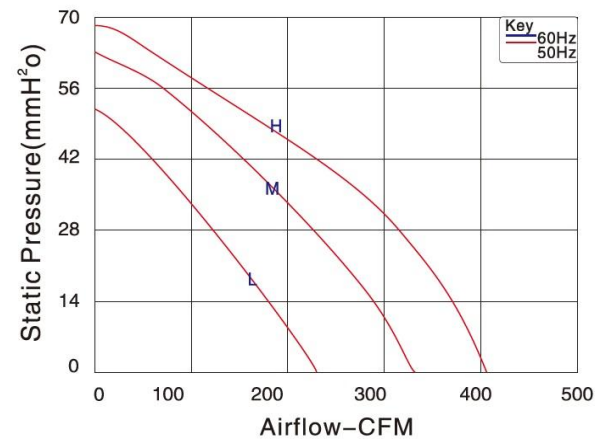
Ø160x225mm

- Dimension:

Unit: mm



- Performance:







Change is a perpetual motion

**Phone:** +886-7-215-0001

**Mobile:** +886-938-016696

**E-mail:** [service@cainton.com](mailto:service@cainton.com)

Address: 9F.-1, No. 171,  
Bizhong St., Yancheng Dist.,  
Kaohsiung City 803002, Taiwan (R.O.C.)

**[www.cainton.com](http://www.cainton.com)**